

Main ECU setting kit

- Main ECU setting kit is used mainly to codify black keys using the red one, and to handle all AT activities like deactivation, reprogramming and so on
- Main ECU kit is necessary for following 4 functions.

Main ECU setting kit

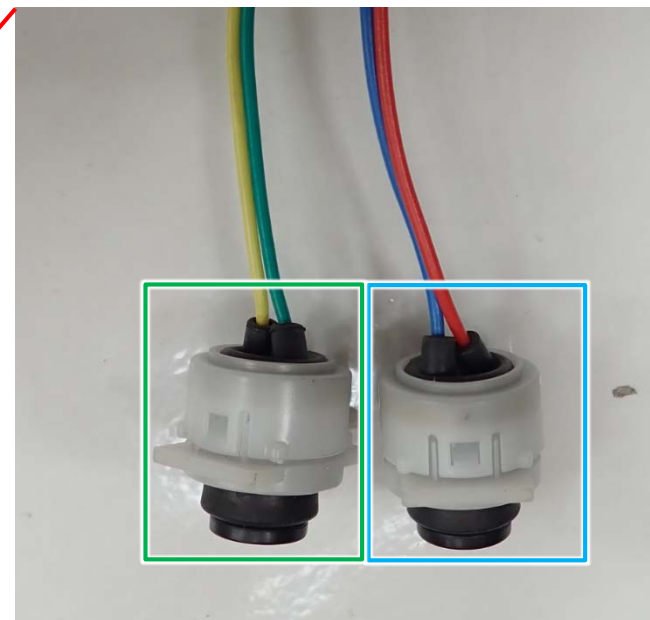


No	Function
1	Dealer setting
2	Anti-theft setting
3	Reading error
4	Tester mode

Features

Main ECU setting kit

For Earth, For Life
Kubota



- User switch
※Wire harness with yellow and green

- Display select switch
※Wire harness with blue and red