

For Earth, For Life



KUBOTA Technical Support centre Europe

Benoît Weiss
KTSE, Manager

Zweibrücken
03.05.2022

SERVICE – BULLETIN

Reference-N°: KTSE - SB - 2207

Water Ingress into the Cabin

Approved by:	<input checked="" type="checkbox"/> International Quality Assurance department
	<input type="checkbox"/> Kubota Technical Support centre Europe

Affected distributors:

- ☒ KBD
- ☒ KE
- ☒ KUK

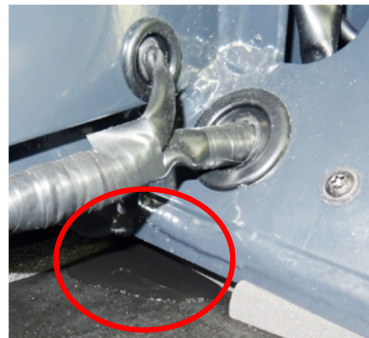
Classification:

- ☐ 1. Information
- ☒ 2. Fix on a failure basis
- ☐ 3. Recommended product improvement
- ☐ 4. Mandatory campaign

Model	Serial N°
KX027-4	→ 56162
KX030-4	→ 52196

A. Subject

Cases of water intrusion at the rear part of the cabin have been reported. Investigations revealed that the water entered through the gaps between the cabin seals. As a series countermeasure, the separated cabin seals have been replaced with a continuous seal. In case of water ingress on the rear side of the cabin follow the instruction below.



B. Service Information

WARNING:

To avoid personal injury:

- Park the machine on a flat and level ground.
- Keep the bucket or other attachment down on the floor.
- Stop the engine and remove the starter key.
- Before any intervention on the hydraulic system, release the residual pressure from the hydraulic circuit.
- Use working clothes and personal protective equipment to avoid personal injury.
- Follow the local safety directives in your country.
- If you work with other persons, make sure your signals are fully understandable and mutually communicative for added safety.
- Hydraulic components and engine parts can be hot. Wait until all components cooled down to avoid burns.

Repair outline:

In case of water intrusion to the cabin as explained above, the cabin seals must be replaced according to the following procedure.

Tools and consumables:

- (1) Ratchet, 1/4 "
- (2) Extension bar, 1/4 ", 120 mm
- (3) Cardan joint, 1/4 "
- (4) Socket, 1/4 ", 12 mm
- (5) Hexagonal wrench socket, 1/4 ", 4 mm
- (6) Spanner, 2x 19 mm
- (7) Torque wrench, 40 N·m - 200 N·m
- (8) Socket, 19 mm

Not shown:

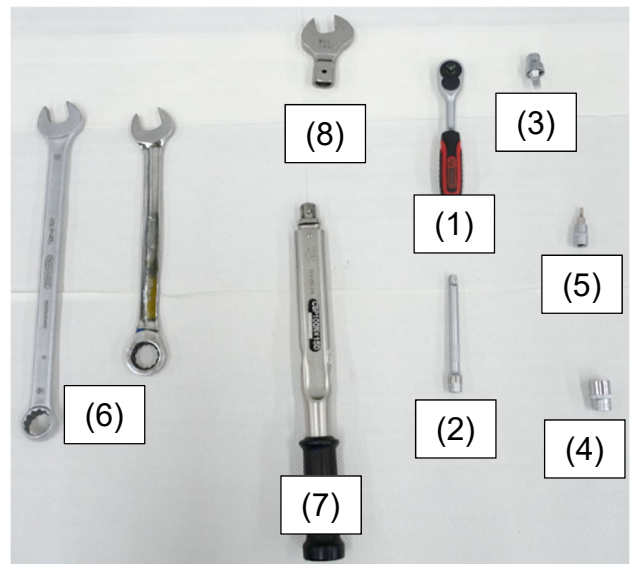
Scraper

Silicone remover

Cloth

2x shackles, size 2

2x nylon slings, length 1,5 m, minimum lifting capacity 500 kg



Note:

Tightening torques not indicated in the present service bulletin are to be taken from the torque specification tables of the machine workshop manual.

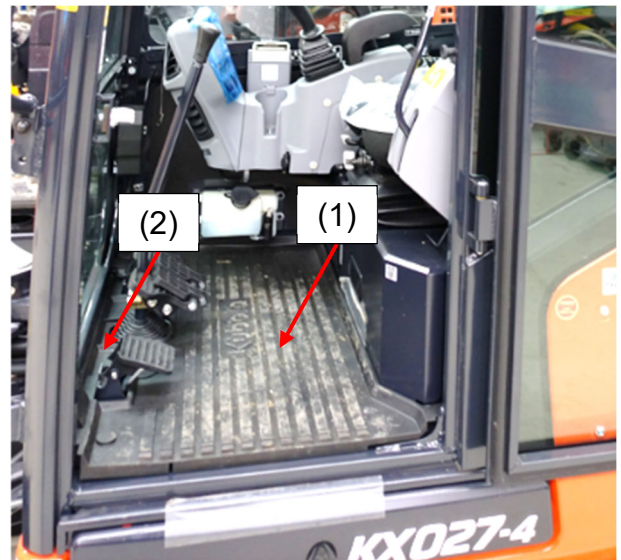
Step 1:

Take a clear picture, showing the water ingress.



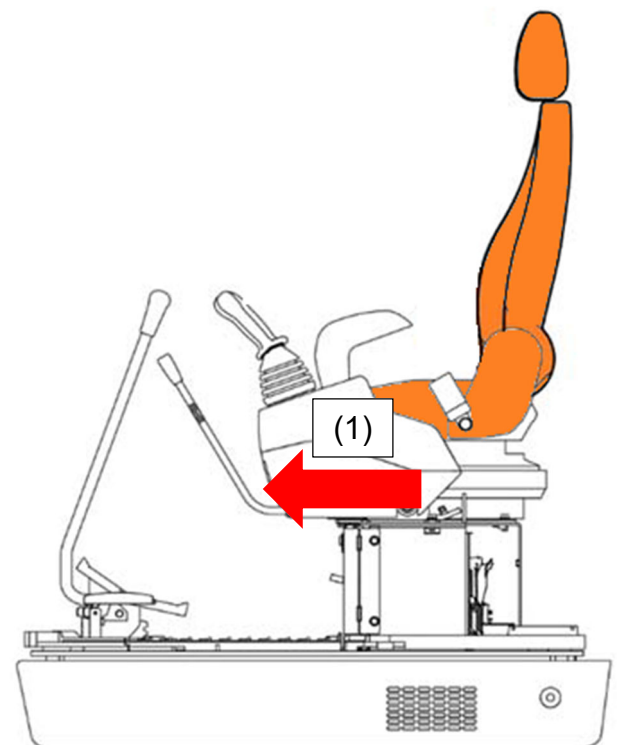
Step 2:

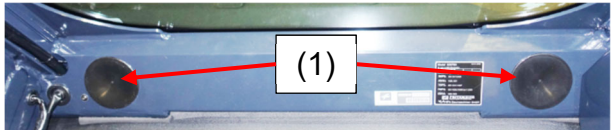
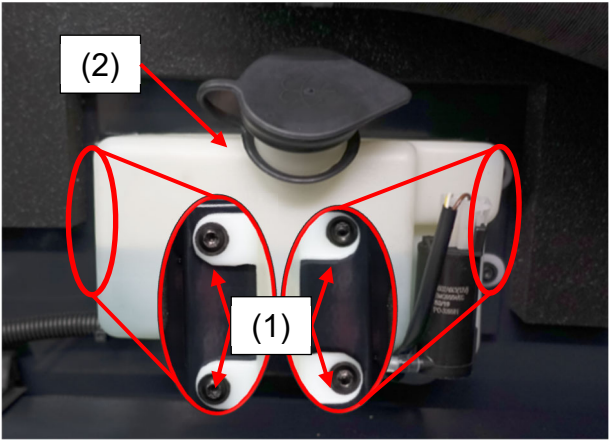
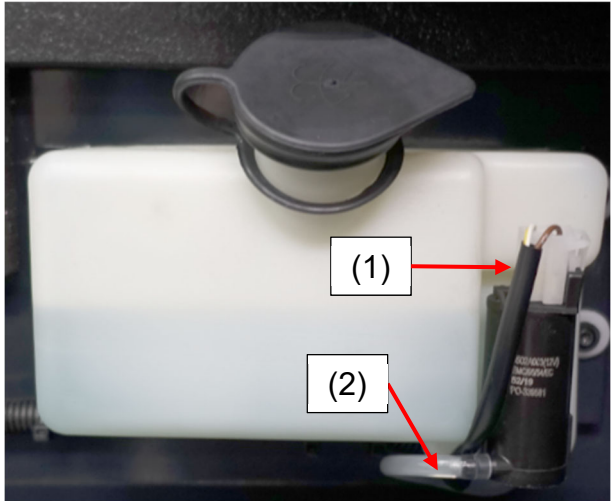
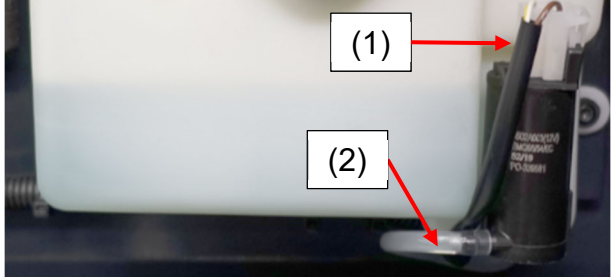
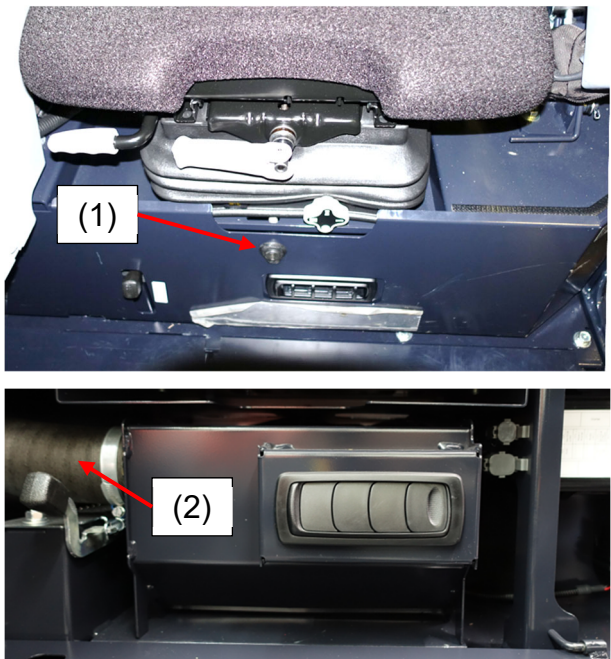
Remove the floor mats (1) and (2).



Step 3:

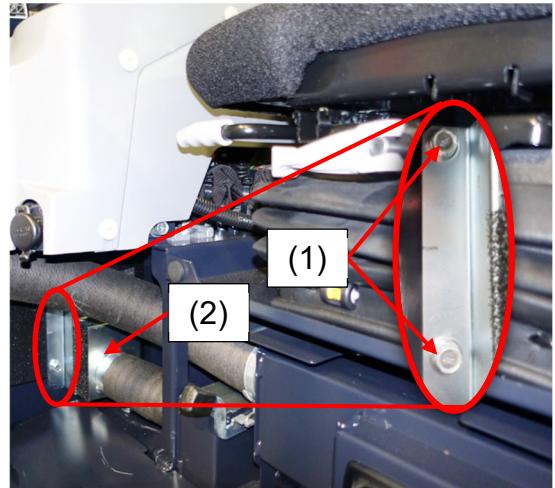
Slide the seat to the front-end position (1).



<p><u>Step 4:</u> Remove the two covers (1) at the back side of the cabin.</p>	
<p><u>Step 5:</u> Remove the four bolts (1) of the washer fluid tank (2).</p>	
<p><u>Step 6:</u> Disconnect the connector (1) from the washer fluid tank and tilt the tank with the water connection facing upward.</p>	
<p><u>Step 7:</u> Disconnect the hose (2) from the washer fluid tank pump.</p>	
<p><u>Step 8:</u> Open the lid (1) under the operator's seat to gain access to the air duct (2).</p>	

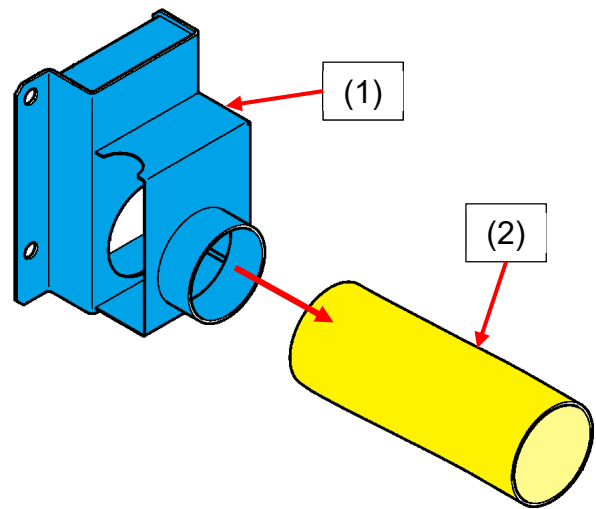
Step 9:

Remove the two bolts (1) of the air duct filter bracket (2).



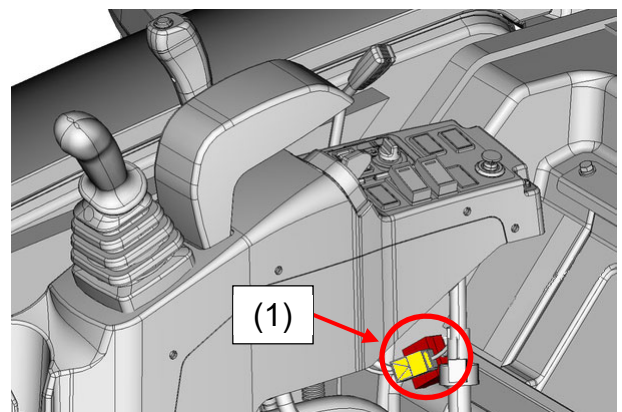
Step 10:

Remove the air duct filter bracket (1) and disconnect it from the air duct (2).



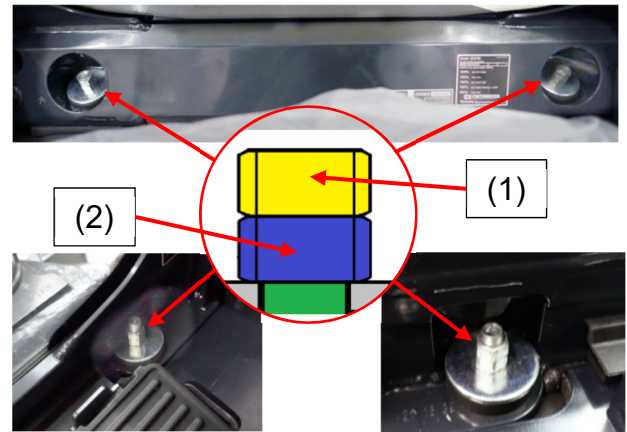
Step 11:

Disconnect the two connectors (1) of the cabin wire harness.



Step 12:

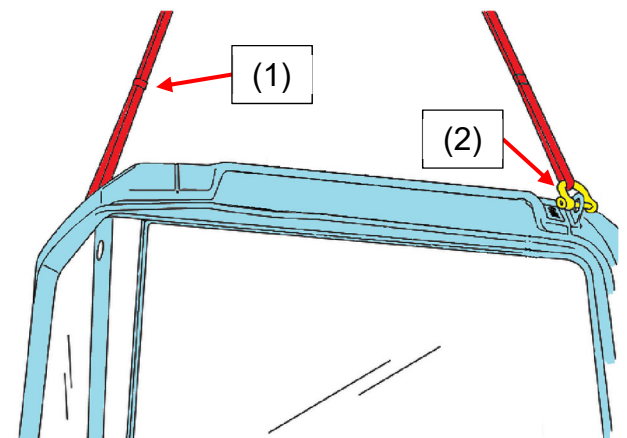
Remove the four counter nuts (1) and the four nuts (2) fixing the cabin.

**Step 13:**

Attach the nylon sling (1) with the shackles (2) to the hooking lugs of the cabin and remove it. Place the cabin on a suitable surface for further work.

Note:

Take special care, to let get the cabin to swing against the control elements while hoisting.

**Step 14:**

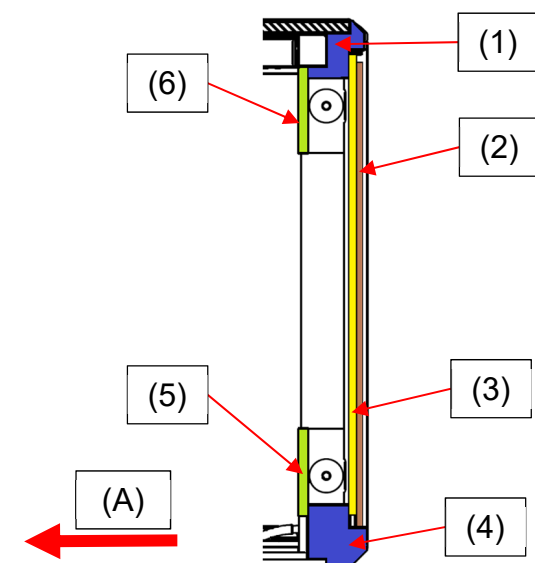
Remove the old rubber sealings (1), (2), (3), (4), (5), and (6).

Note:

The picture shows the cabin from the bottom side.

Glue remnants can be removed with silicone remover and a cloth.

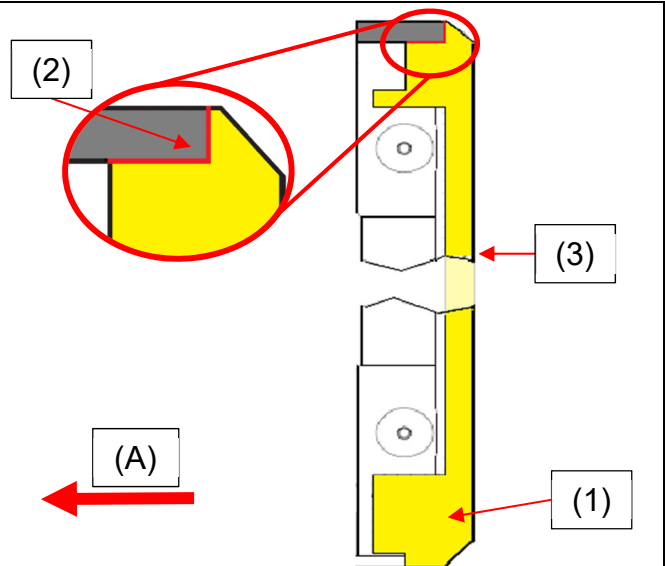
(A) to the front



Step 15:

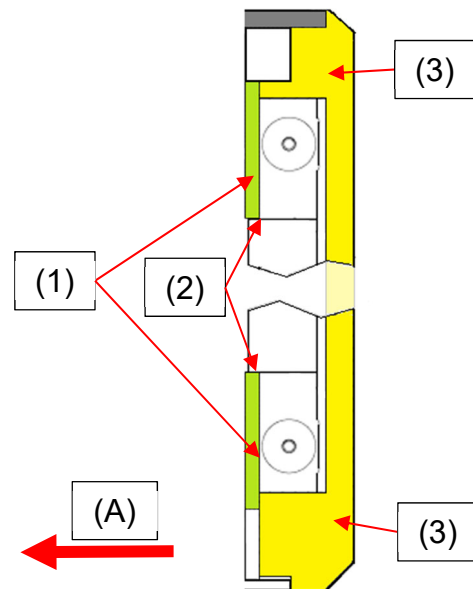
Attach the new sealing (1) (RG268-4969-0) to the cabin. The new seal must contact the remaining seal (2) on both sides and must be aligned to the edge of the cabin (3).

(A) to the front

**Step 16:**

Attach the two new sealings (1) (RG268-4968-0) to the cabin. The sealings must be aligned to the edge (2) and must contact the sealing (3) (RG268-4969-0).

(A) to the front

**Step 17:**

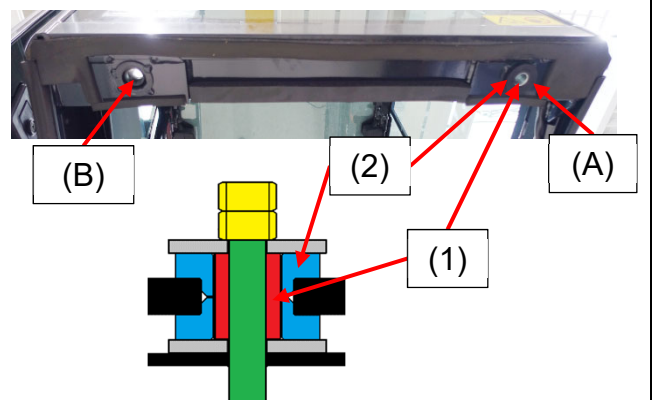
Assemble the cabin onto the frame.

Note:

Make sure that the sleeves (1) and the rubber buffers (2) are installed correctly.

(A) Correct

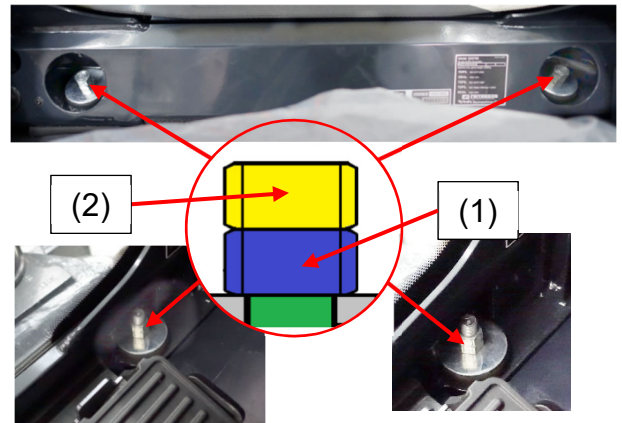
(B) Not correct



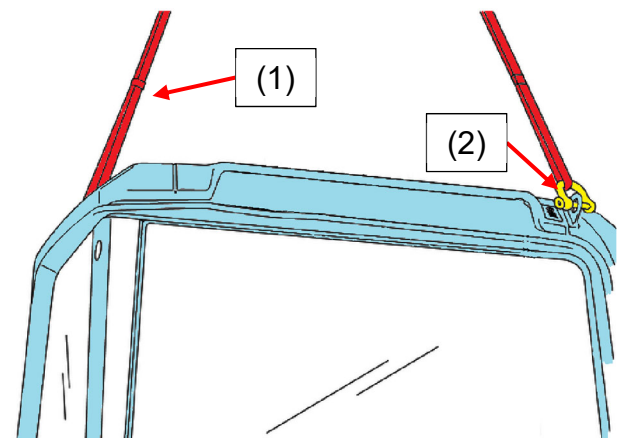
Step 18:

Install the four nuts (1) and the four counter nuts (2) of the cabin.

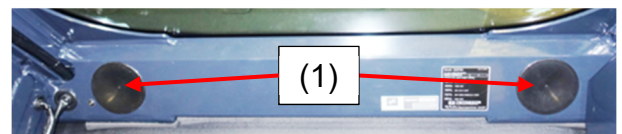
Tightening torque: 107,9 N·m - 125,5 N·m

**Step 19:**

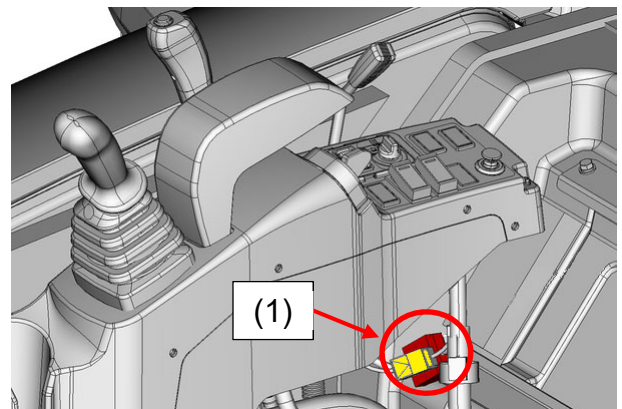
Remove the nylon sling (1) and the shackles (2) from the cabin.

**Step 20:**

Reinstall the two covers to the cabin frame.

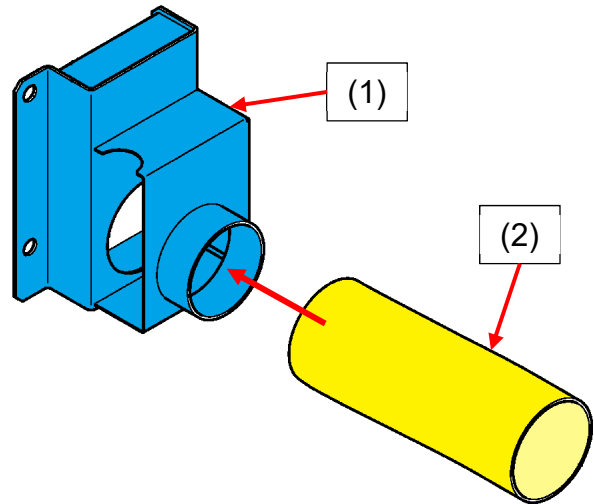
**Step 21:**

Reconnect the two connectors (1) of the cabin wire harness.

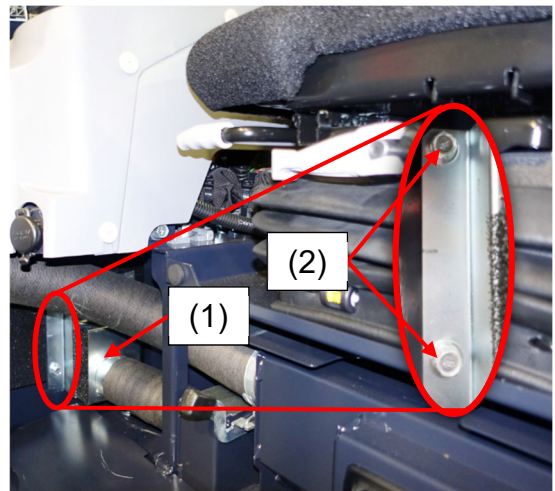


Step 22:

Connect the air duct filter bracket (1) to the air duct (2).

**Step 23:**

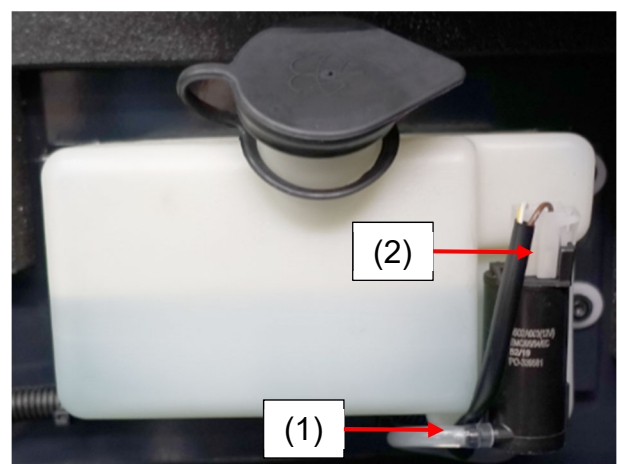
Assemble the air duct filter bracket (1) to the cabin with the two bolts (2).

**Step 24:**

Close the lid (1) under the operator's seat.

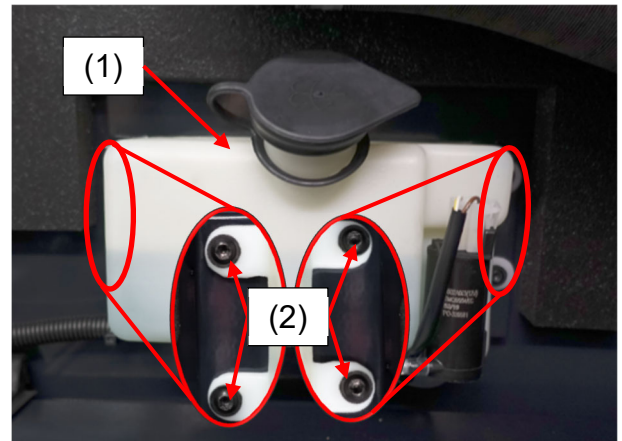
**Step 25:**

Reconnect the hose (1) and the connector (2) to the washer fluid tank.

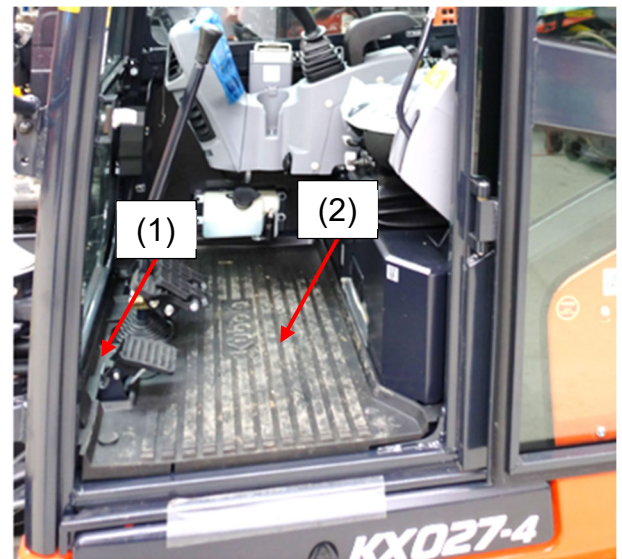


Step 26:

Attach the washer fluid tank (1) with the four bolts (2) to the cabin.

**Step 27:**

Reinstall the floor mats (1) and (2).

**C. Spare Part Information**

Part number	Part name	Qty
RG268-4969-0	Rubber, Sealing (Rear)	1
RG268-4968-0	Rubber, Sealing (155)	2

D. Warranty Information

1. Conditions:

For this specific problem, up to 5 years after machine retail date:

Parts:	Yes
Labour:	2,2 hours
Mileage:	Yes
Campaign allowance:	No

2. Replaced parts:

☐ Return ☐ Store ☒ Attach photos to claim, then scrap ☐ Scrap

This instruction has priority to the ones given by Kubota Net at time of claim posting.

Ensure to mention this bulletin's reference number on the related warranty claim.