

Benoît Weiss
KTSE, Manager

Zweibrücken
23.09.2022

SERVICE-BULLETIN

Reference-N°: KTSE - SB - 2212

Fuel Level Sensor Failures

Approved by:	<input checked="" type="checkbox"/> International Quality Assurance department
	<input type="checkbox"/> Kubota Technical Support centre Europe

Affected distributors:

- ☒ KBD
- ☒ KE
- ☒ KUK

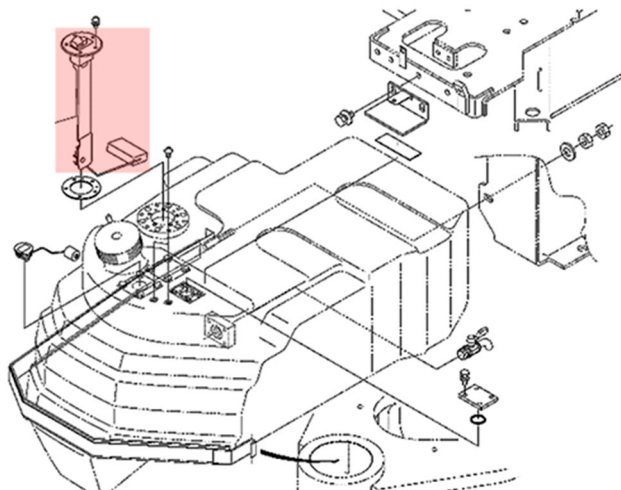
Classification:

- ☐ 1. Information
- ☒ 2. Fix on a failure basis
- ☐ 3. Recommended product improvement
- ☐ 4. Mandatory campaign

Model	Serial N°
KX080-4Alpha	All
KX080-4Alpha2	→ 78087

A. Subject

Some cases of wrong level information or complete failure of the fuel sensor have been reported. Investigations revealed, that due to a deformation of the fuel tank, the lever of fuel level sensor cannot move properly, resulting in a failure / malfunction of the fuel level sensor. As a countermeasure, the shape of the fuel level sensor was changed. The float will move inward to keep enough space even if the fuel tank is deformed. We herewith inform you about the measure to take in such failure case.



B. Service Information

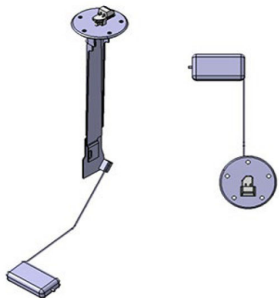
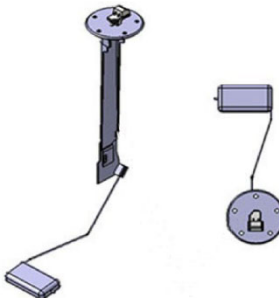
WARNING:

To avoid personal injury:

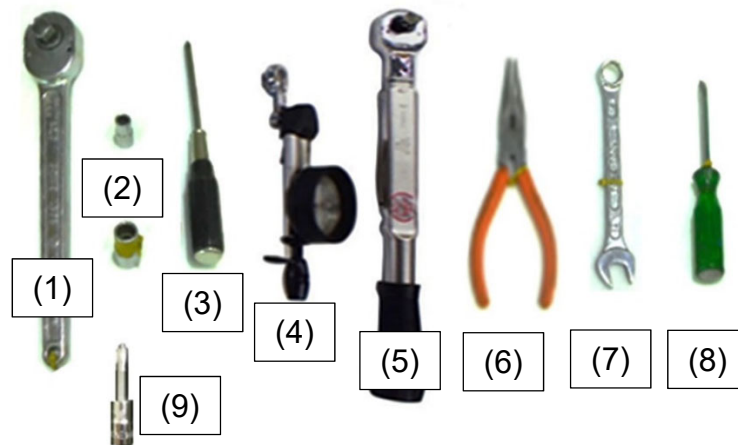
- Park the machine on a flat and level ground.
- Keep the bucket or other attachment down on the floor.
- Stop the engine and remove the starter key.
- Before any intervention on the hydraulic system, release the residual pressure from the hydraulic circuit.
- Use working clothes and personal protective equipment to avoid personal injury.
- Follow the local safety directives in your country.
- If you work with other persons, make sure your signals are fully understandable and mutually communicative for added safety.
- Hydraulic components and engine parts can be hot. Wait until all components cooled down to avoid burns.

Repair outline:

In the event of wrong level information or complete failure of the fuel sensor, replace the affected fuel sensor according to the following instructions.

Old type	New type
	

Tools and consumables:



- (1) Ratchet ½"
- (2) Sockets ½", 7, 14 mm
- (3) Crosshead screw driver, PH2
- (4) Torque wrench ¼", 2 N·m - 10 N·m
- (5) Torque wrench ½", 10 N·m - 60 N·m
- (6) Universal pliers
- (7) Spanner, 14 mm
- (8) Slotted screw driver, 1,2 x 6,5
- (9) Socket ¼", crosshead screw driver, PH2

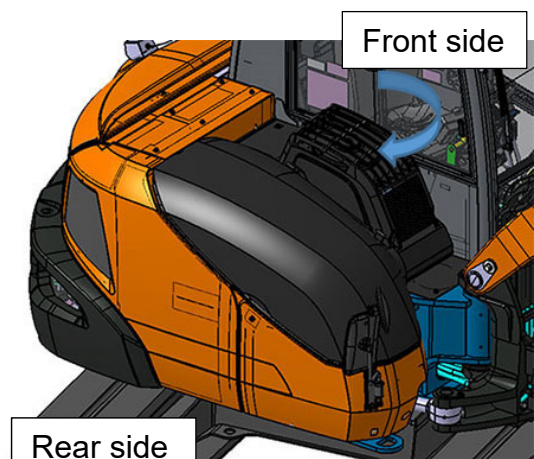
Not shown:
Fuel catch container

Note:

Tightening torques not indicated in the present service bulletin are to be taken from the torque specification tables of the machine workshop manual.

Step 1:

Turn the swing frame to the right about 90° degrees.

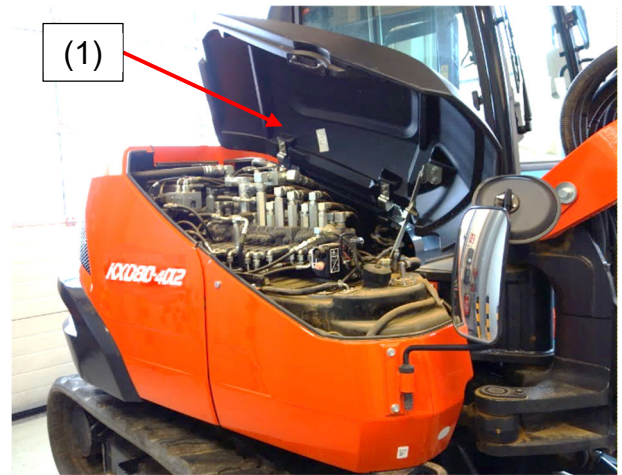


Step 2:

Stop the engine, release the residual pressure of the hydraulic system and remove the starter key from the starter switch.

Step 3:

Open the RH top cover (1).



Step 4:

Open the engine bonnet (1).



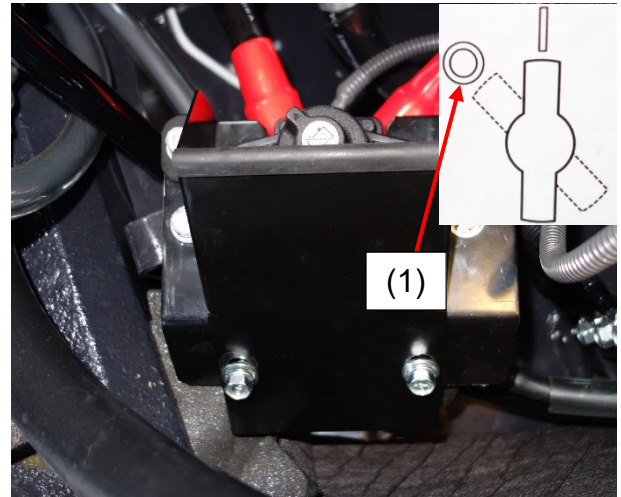
Step 5:

Open the RH cover (1).

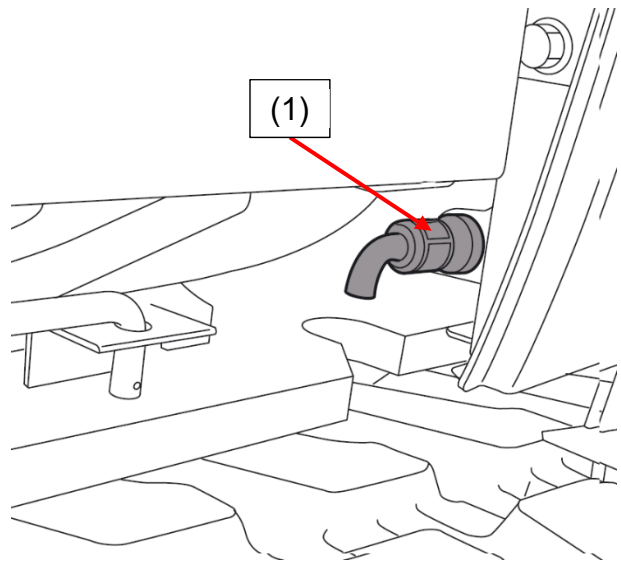


Step 6:

Turn the battery isolator switch to “O” (“OFF”) (1).

**Step 7:**

Use the fuel catch container, open the drain cock (1) and drain fuel until the fuel tank is approximately half full (to prevent spillage of fuel in the tank when removing the fuel sensor).

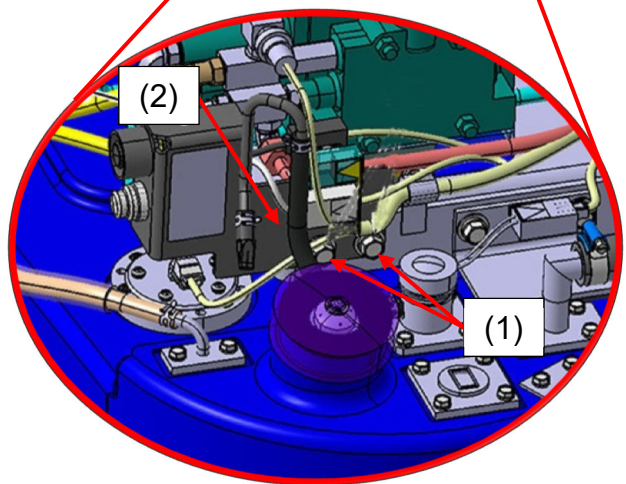
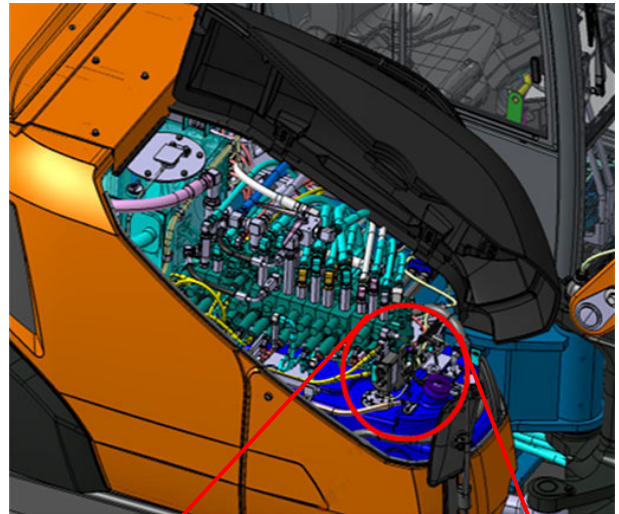


Step 8:

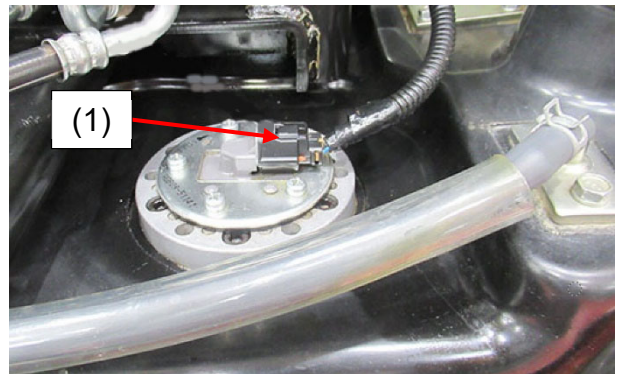
Remove the two bolts (1) and the bracket (2).

Note:

The bracket (1) and the two bolts (2) will be reused.

**Step 9:**

Disconnect the connector (1) of the fuel level sensor.

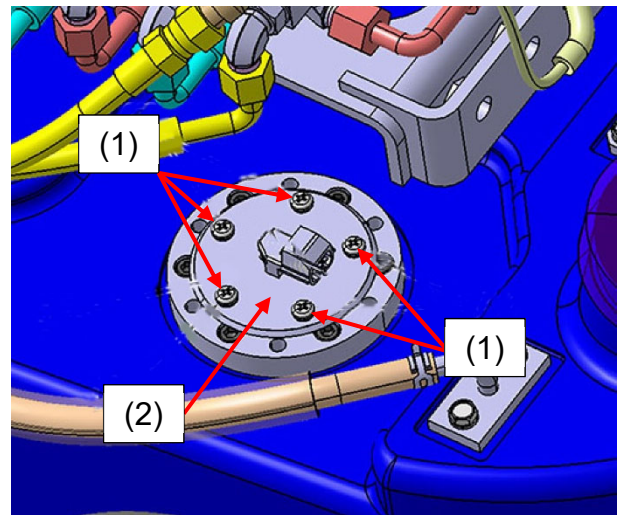


Step 10:

Remove the five bolts (1) and the fuel level sensor (2).

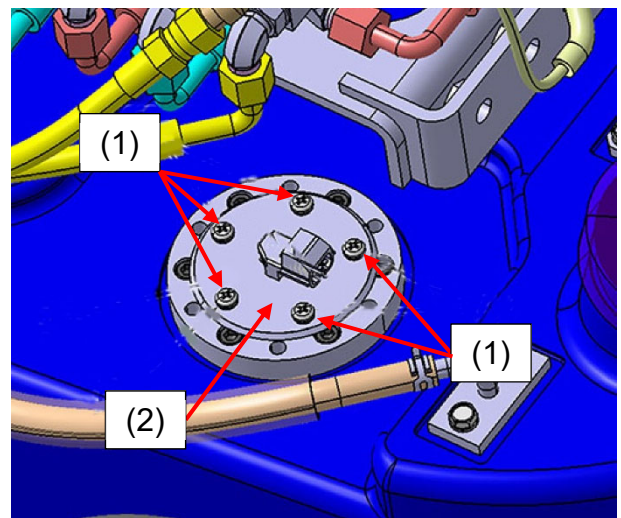
Note:

The bolts (1) will be reused. The fuel level sensor (2) can be scrapped.

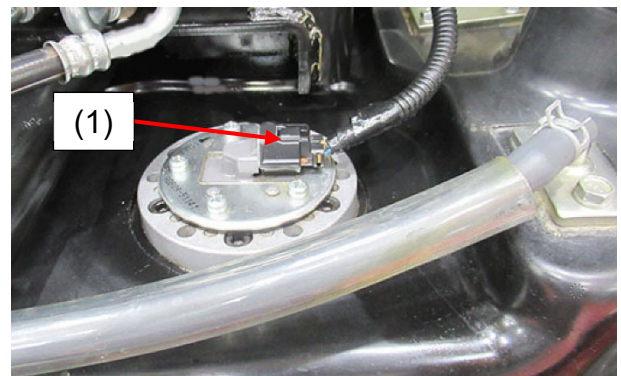
**Step 11:**

Install the new fuel sensor (1) (RD809-5114-2) with the five bolts (2).

Tightening torque: 3,0 N·m - 4,0 N·m

**Step 12:**

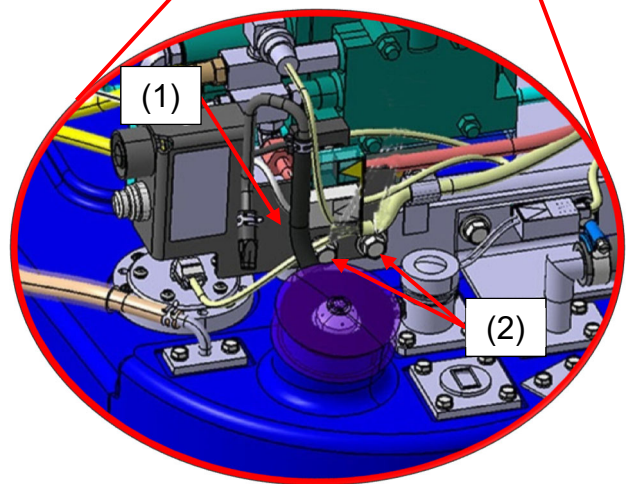
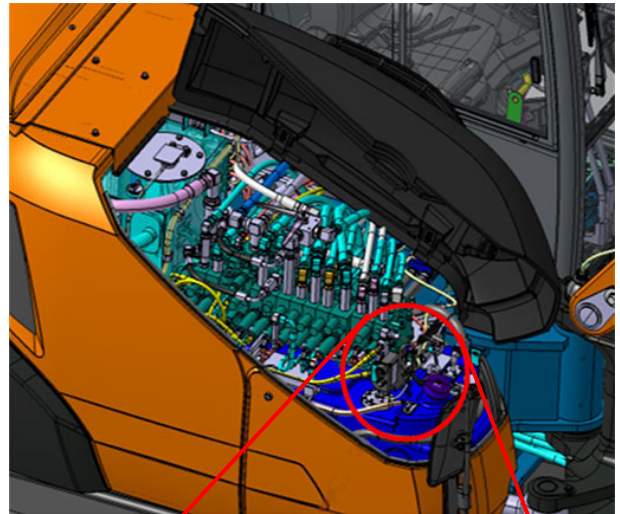
Connect the fuel sensor with the connector (1).



Step 13:

Install the bracket (1) with the two bolts (2).

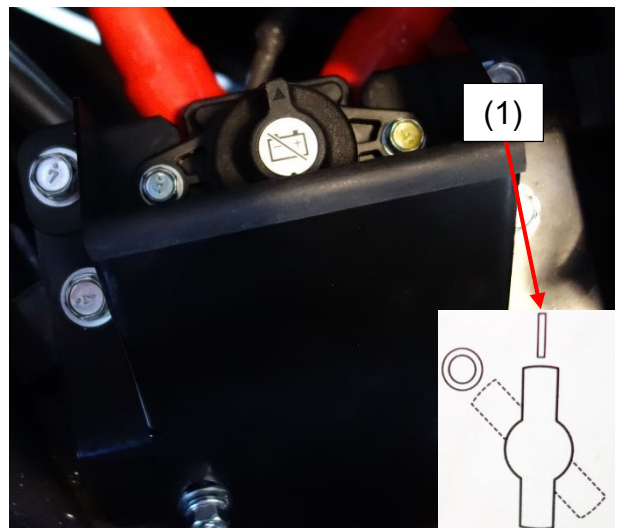
Tightening torque: 48,1 N·m - 55,9 N·m

**Step 14:**

Refill the fuel tank and check for any leakage.

Step 15:

Turn the battery isolator switch to "I" ("ON") (1).



Step 16:

Close the RH bonnet (1).



Step 17:

Close the engine bonnet (1).



Step 18:

Close the RH top cover (1).



C. Spare Part Information

Part number	Part name	Qty
RD809-5114-2	Assy sensor	1

D. Warranty Information

1. Conditions:

For this specific problem, up to 5 years after machine retail date:

Parts: Yes
Labour: 1 hour
Mileage: Yes
Campaign allowance: No

2. Replaced parts:

☐ Return ☐ Store ☐ Attach photos to claim, then scrap ☒ Scrap

This instruction has priority to the ones given by Kubota Net at time of claim posting.

Ensure to mention this bulletin's reference number on the related warranty claim.