

For Earth, For Life



KUBOTA Technical Support centre Europe

Benoît Weiss
KTSE, Manager

Keiichiro Yamamoto
KTSE, General Manager

Zweibrücken
20.07.15

SERVICE-BULLETIN

Reference-N°: KTSE - SB - 1503

Measures against Heat and Noise in Cabin on U27-4

Approved by:	<input checked="" type="checkbox"/> International Quality Assurance department
	<input type="checkbox"/> Kubota Technical Support centre Europe

Affected distributors:

- ☒ KBD
- ☒ KE
- ☒ KUK

Classification:

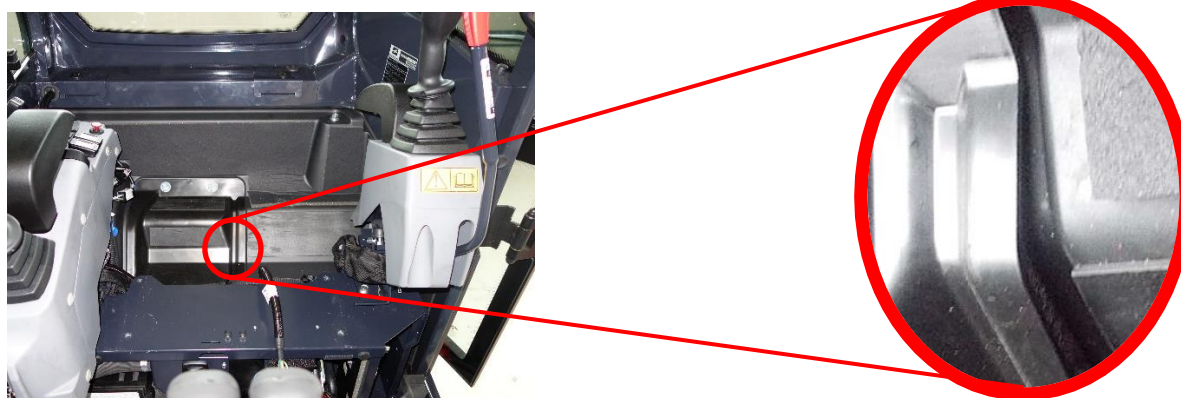
- ☐ 1. Information
- ☒ 2. Fix on a failure basis
- ☐ 3. Recommended product improvement
- ☐ 4. Mandatory campaign

Model	Serial N°
U27-4	→ 57197

A. Subject

Cases of customer complaints about excessive temperature and/or noise in cabins were reported.

Investigations revealed that the rear maintenance cover was not well sealing with the rear sheathing, thus allowing hot air and noise from engine compartment to enter the cabin room.



As series countermeasure, the maintenance cover fixation was improved by adding a supplementary bolt and the rear sheathing was rigidified with a metal bar which prevents deformation. We herewith inform you the measures to take in case of customer claim.

B. Service Information

WARNING:

To avoid personal injury:

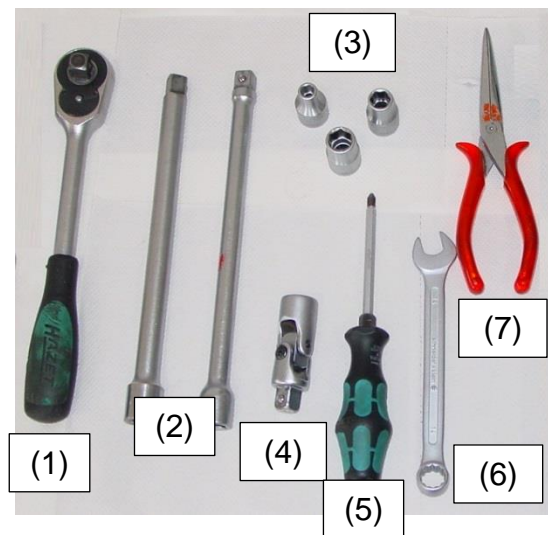
- Park the machine on a flat and level ground.
- Keep the bucket or other attachment down on the floor.
- Stop the engine and remove the starter key.
- Release the residual pressure from the hydraulic circuit.
- Use working clothes and personal protective equipment to avoid personal injury.
- Follow the local safety directives in your country.
- If you work with other persons, make sure your signals are fully understandable and mutually communicative for added safety.

Repair outline:

- 1) Exchange the maintenance cover for the new one having an additional fixation.
- 2) Add a reinforcement bar to the rear sheathing.

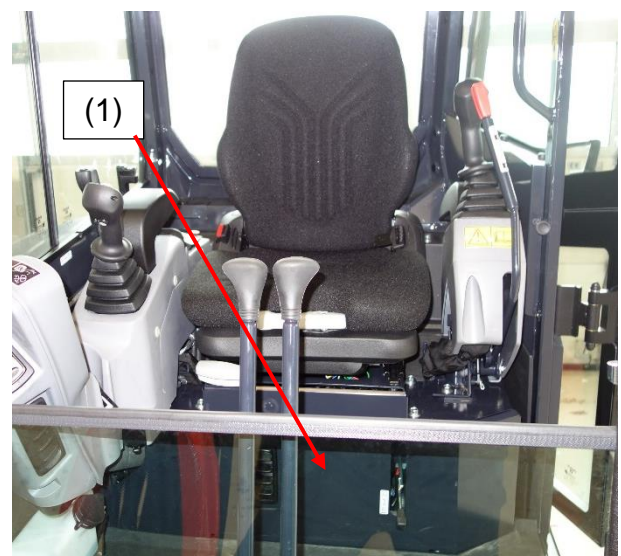
Tools:

- (1) Ratchet
- (2) 2x Extension bar, 200mm
- (3) Sockets, 7mm, 12mm, 14mm
- (4) Joint adapter
- (5) Screwdriver, PH 2
- (6) Spanner, 14mm
- (7) Long-nosed pliers



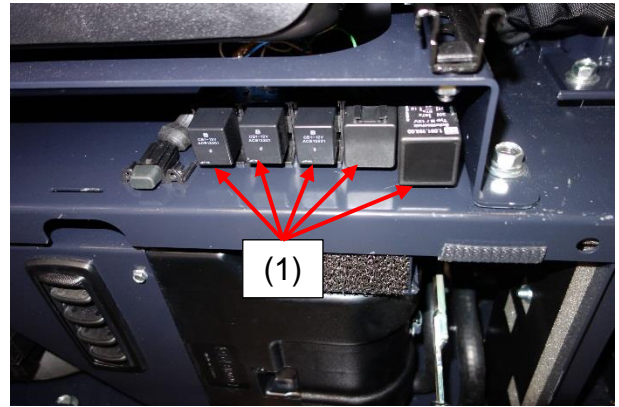
Step 1:

Open the lid (1) of the seat support with the starter key.

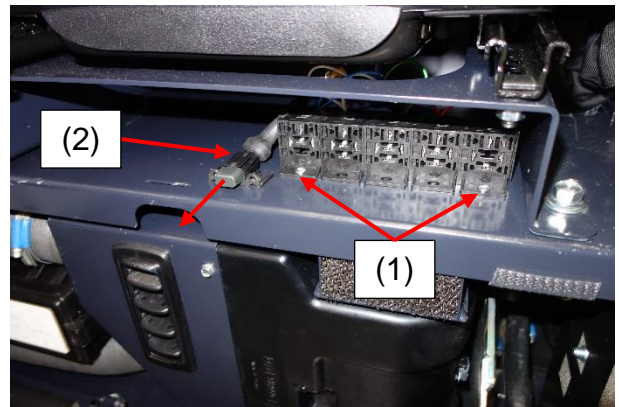


Step 2:

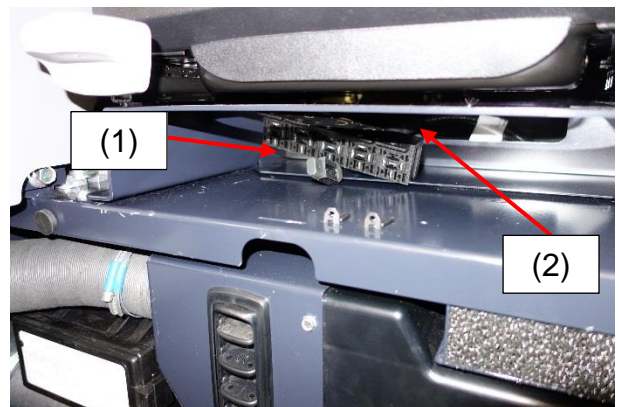
(This step is only for machines equipped with SP1 proportional kit).
Remove all relays (1) from the socket located under the seat.

**Step 3:**

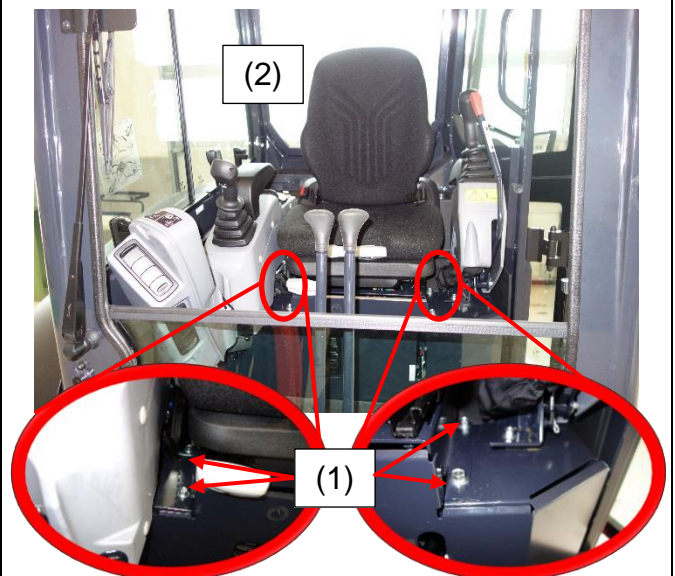
(This step is only for machines equipped with SP1 proportional kit).
Remove the two screws (1) and pull out the fuse socket (2) to the front.

**Step 4:**

(This step is only for machines equipped with SP1 proportional kit).
Put the sockets (1) out through the opening (2) at the backside of the seat support.

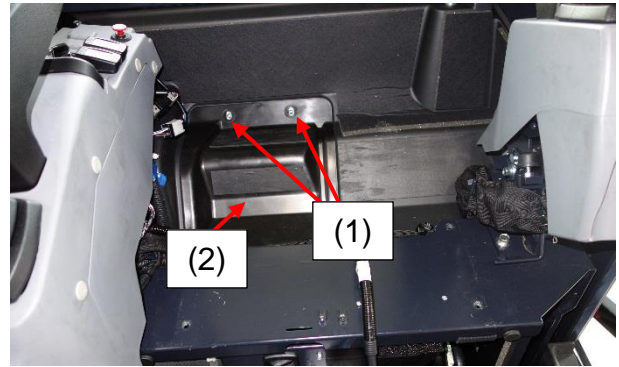
**Step 5:**

Remove the four screws (1) of the seat support and remove the seat (2) together with the seat support.



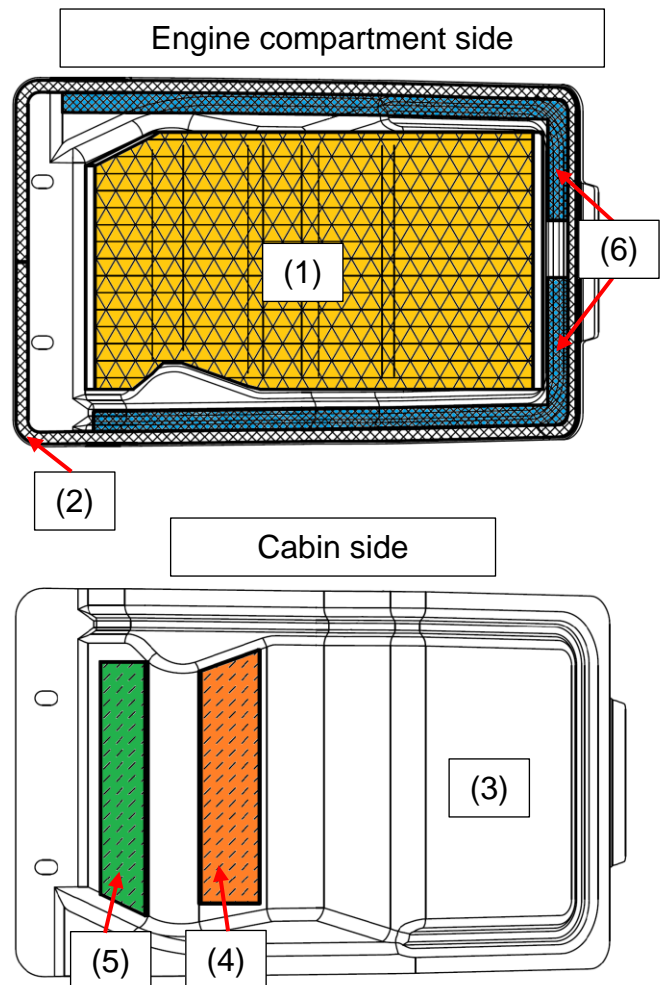
Step 6:

Remove the two bolts (1) and disassemble the maintenance cover (2).

**Step 7:**

Attach the insulation, sponges and rubber pads to the new maintenance cover.

- (1) RH418-4328-0, Insulation, cover
- (2) RB557-4319-0, Tape, seal
- (3) RH418-4312-3, Maintenance cover
- (4) RB557-4392-0, Rubber pad
- (5) RB557-4393-0, Rubber pad
- (6) RB557-4329-0, Tape, seal (2x)



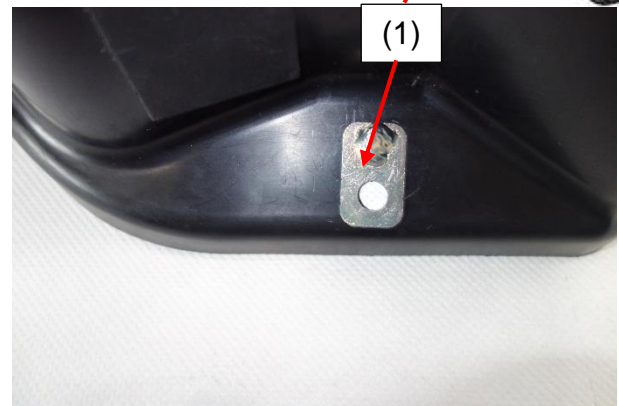
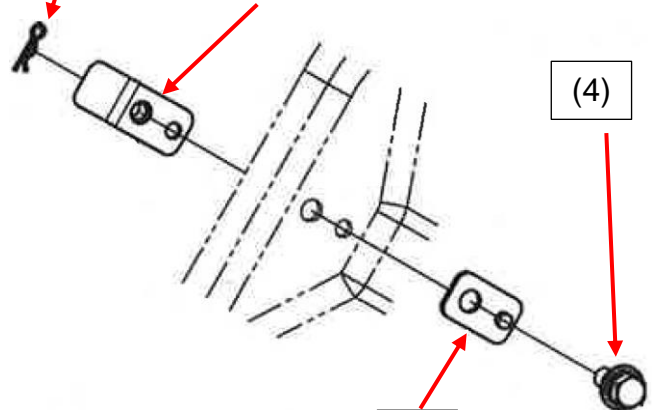
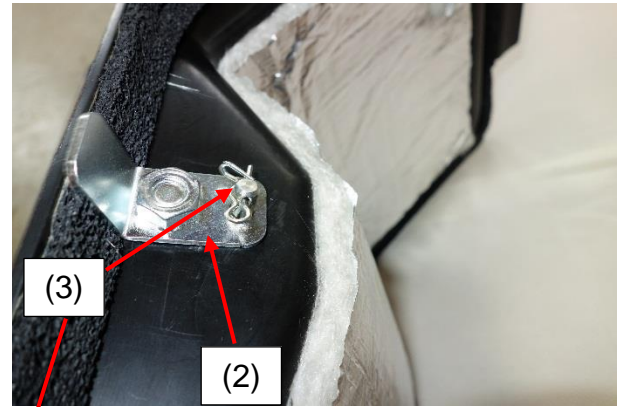
Step 8:

Insert the stay (1) (RH418-4344-0) into the holes of the maintenance cover like shown in the picture.

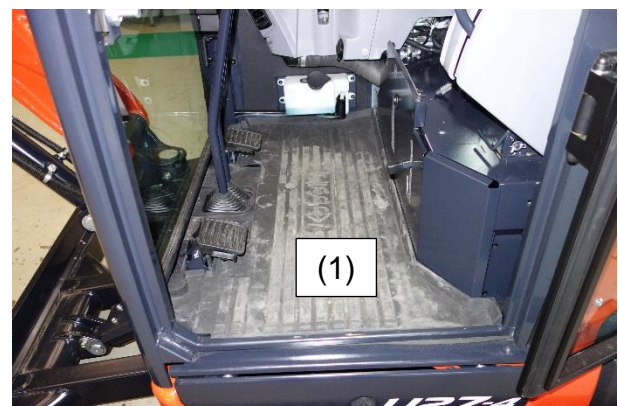
Step 9:

Attach the stay (2) (RH418-4338-0) to the maintenance cover and secure it with the snap pin (3).

Tighten the bolt (4) with only four turns.

**Step 10:**

Remove the floor mat (1).

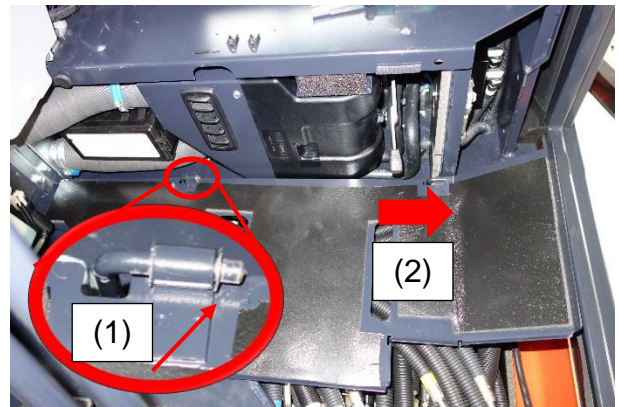


Step 11:

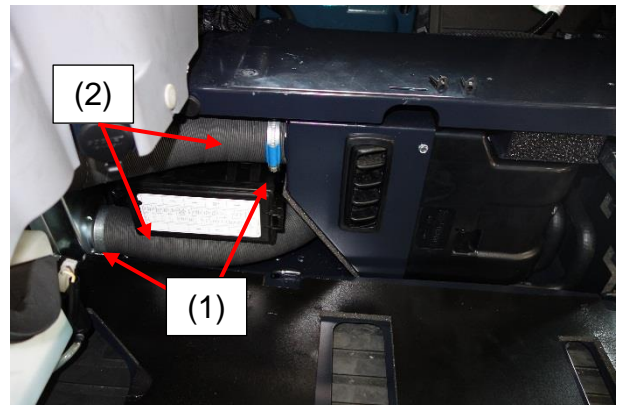
Take out the floor plate (1).

**Step 12:**

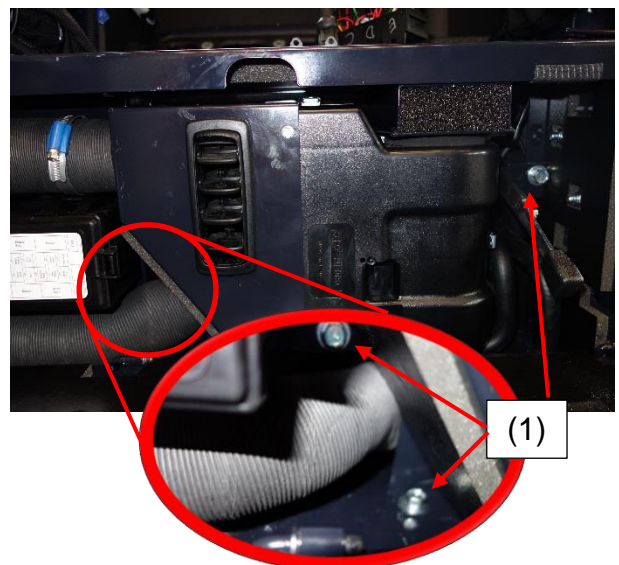
Remove the circlip (1) and pull the lid out laterally (2).

**Step 13:**

Loosen the two hose clamps (1) and disconnect both air hoses (2).

**Step 14:**

Remove the three heater fixation bolts (1).



Step 15:

Move the heater to the side like shown in the picture.

Note:

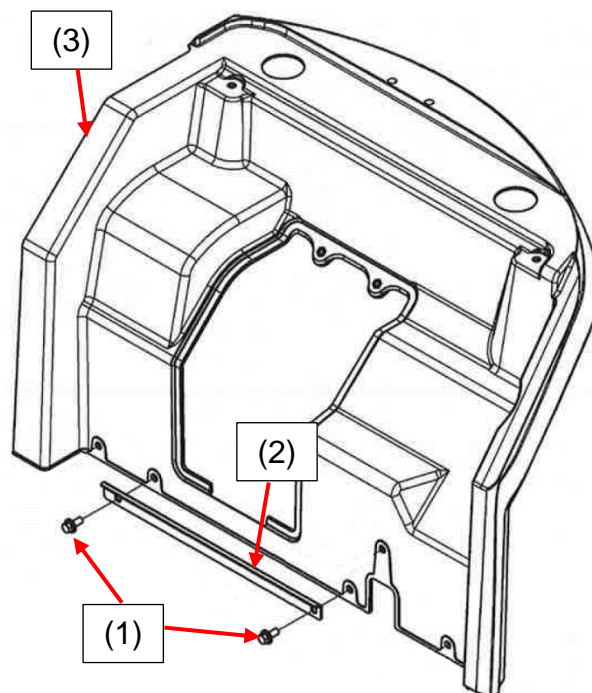
Do not pull out the heater too far, as the coolant hoses remain connected to the heater and could get ripped-off.

**Step 16:**

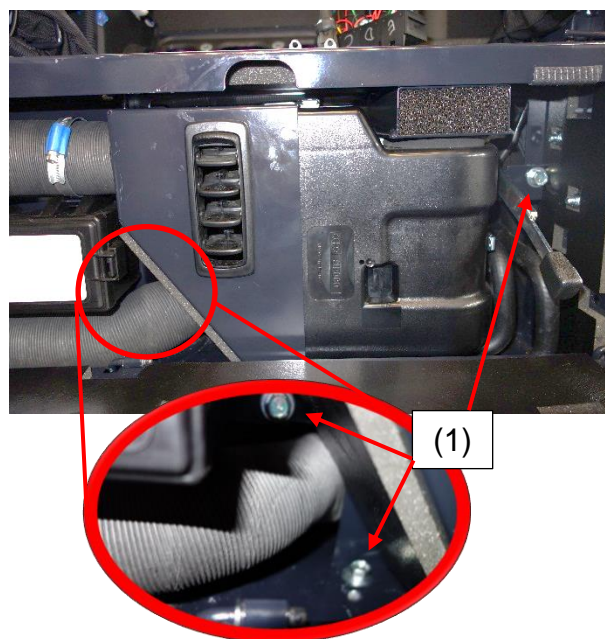
Remove the two bolts (1) of the rear cabin sheathing (3).

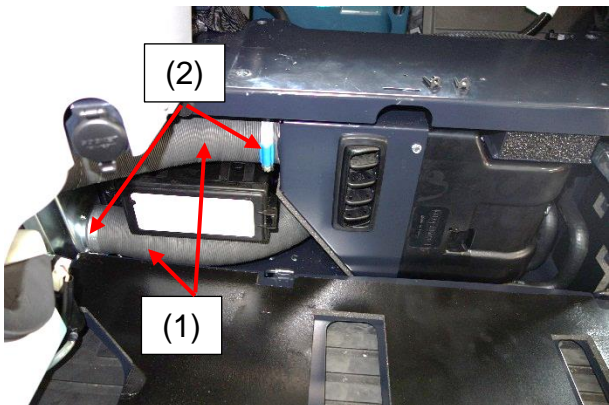
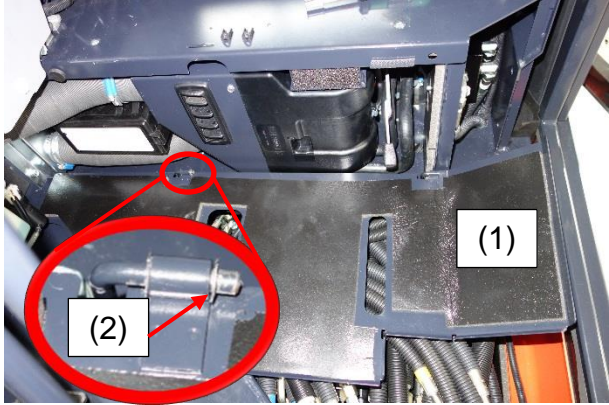

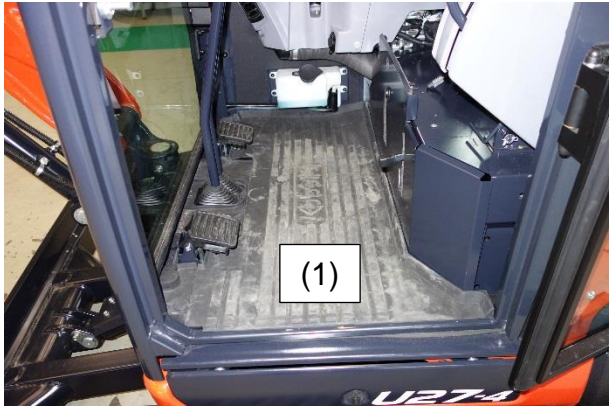
Step 17:

Attach the bar (2) RH418-4313-0 like shown in the picture and fix the two bolts (1) again.

**Step 18:**

Attach the heater with the three bolts (1).

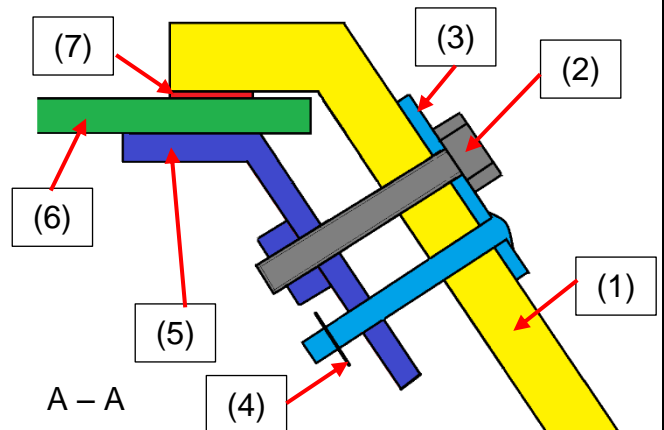
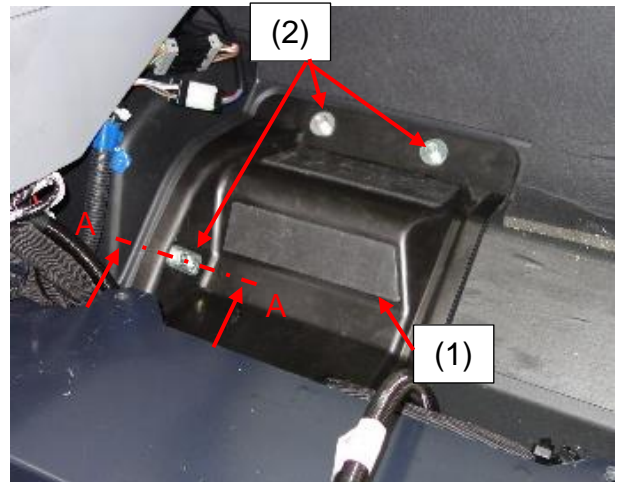


<p><u>Step 19:</u> Reconnect the two air hoses (1) and tighten the hose bands (2).</p> <p>Tightening torque : 2,5N m</p>	
<p><u>Step 20:</u> Assemble the lid (1) and the circlip (2).</p>	
<p><u>Step 21:</u> Install the floor plate (1).</p>	
<p><u>Step 22:</u> Install the floor mat (1).</p>	

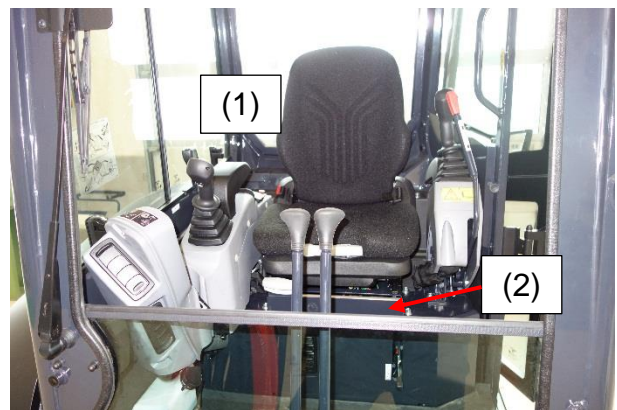
Step 23:

Attach the maintenance cover (1) and tighten the three bolts (2).

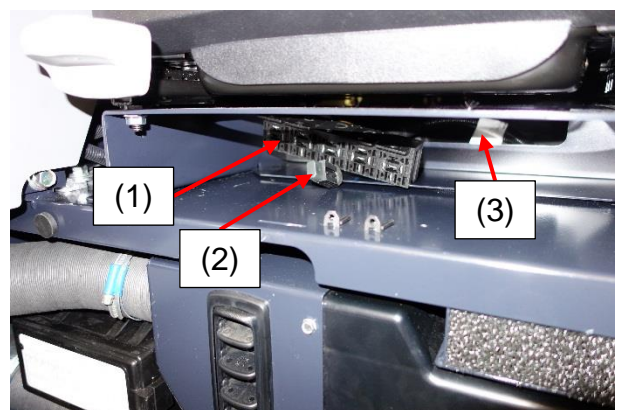
- (1) Maintenance cover
- (2) Bolts
- (3) Stay 1
- (4) Snap pin
- (5) Stay 2
- (6) Rear sheathing
- (7) Seal

**Step 24:**

Place the seat (1) onto the seat support (2) without mounting it with bolts (will be done in step 29).

**Step 25:**

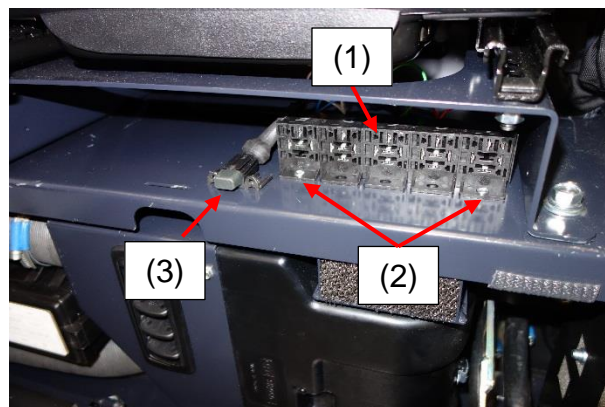
(This step is only for machines equipped with SP1 proportional kit).
Pass the relay socket (1) and the fuse (2) through the opening at the backside of the seat support (3).



Step 26:

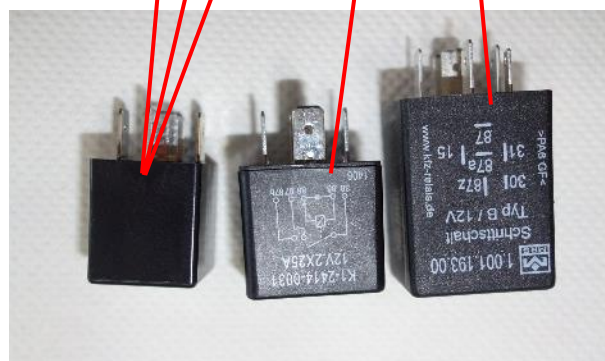
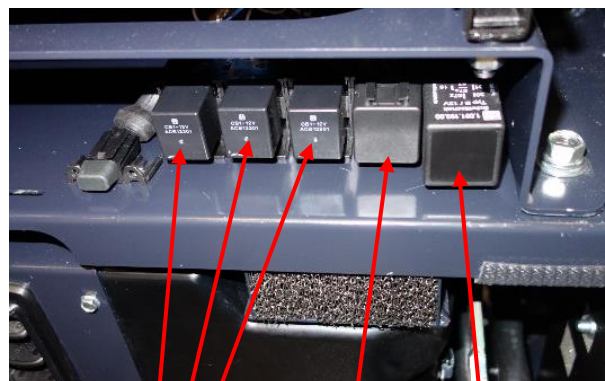
(This step is only for machines equipped with SP1 proportional kit).

Attach the relay socket (1) with the two screws (2), and fix the fuse by inserting it from the front into the guide (3).

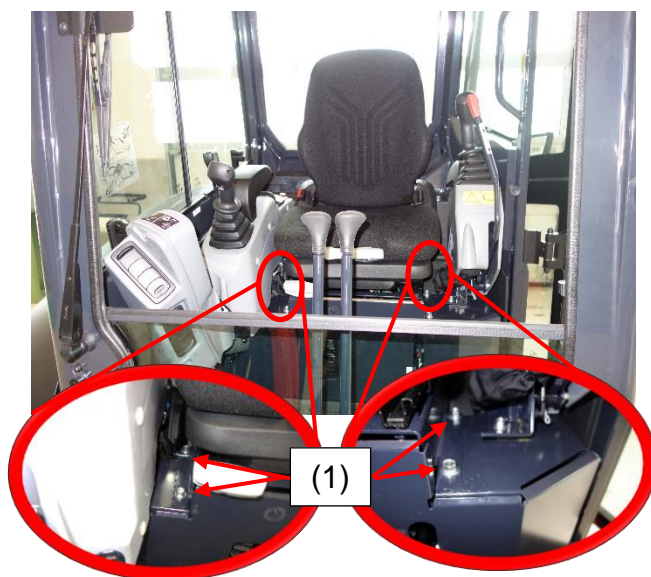
**Step 27:**

(This step is only for machines equipped with SP1 proportional kit).

Reinstall the relays into the socket according the picture.

**Step 28:**

Mount and tighten the four bolts (1) of the seat support.



C. Spare Part Information

Part number	Part name	Quantity
RH418-4313-0	Bar	1
RH418-4338-0	Stay 2	1
RH418-4344-0	Stay 1	1
05525-5060-0	Snap pin	1
01125-5082-0	Bolt	1
RH418-4328-0	Insulation, cover	1
RB557-4319-0	Tape, seal	1
RH418-4312-3	Maintenance cover	1
RB557-4392-0	Rubber pad	1
RB557-4393-0	Rubber pad	1
RB557-4329-0	Tape, seal	2

D. Warranty Information

1. Conditions:

Parts: Yes
Labour: 2,0 hours
Mileage: Yes
Campaign allowance: No

2. Replaced parts:

☐ Return ☐ Store ☒ Attach photos to claim, then scrap ☐ Scrap

This instruction has priority to the ones given by Kubota Net at time of claim posting.

Ensure to mention this bulletin's reference number on the related warranty claim.