

For Earth, For Life

Kubota

SERVICE-BULLETIN KE-RT0215

New wiper motor on RT270 and RT280

Affected distributors:

- ☐ KUK
- ☒ KE
- ☐ KBD

Classification:

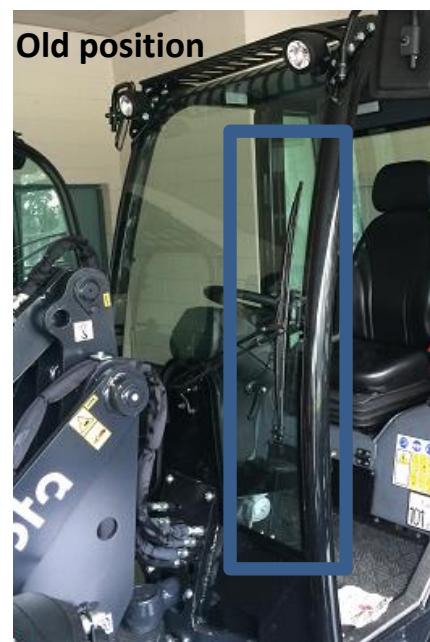
- ☐ 4. Mandatory campaign
- ☐ 3. Recommended product improvement
- ☐ 2. Fix on a failure basis
- ☒ 1. Information

Model
RT270
RT280

A. Object:

Tobroco has informed Kubota Europe about a supplier change of wiper motor on above models. In order to identify the version installed on a machine take as reference the arm blade rest position, if it stays on the left side of the operator, this means that it's installed the old type wiper motor (see the below photo),

Pay attention, to install correctly the new wiper motor it's necessary you must modify the installation holes on the cabin frame.



B. Service information:

To avoid personal injury:

- Park the machine on a flat and level ground
- Shut down the engine and remove the starter key
- Engine and hydraulics component can be hot, wait until all components are cooled to avoid burns.
- Use working clothes and personal protective equipment to avoid personal injury.
- Follow strictly the local safety legislation.

Procedure:

Step 1: Remove the arm blade from the wiper motor (see the photo N°1)



Step 2 : remove the four bolts (marked in the photos N°3 and 4) at the base of the column steering (see photos N°2 column steering, N°3 left side of the column steering and N°4 right side of the column steering). Remove the steering column from the steering pump if it is necessary, and fold back the steering column in order to have more space to remove the old motor and install the new one.



Photo N°2



Photo N°3

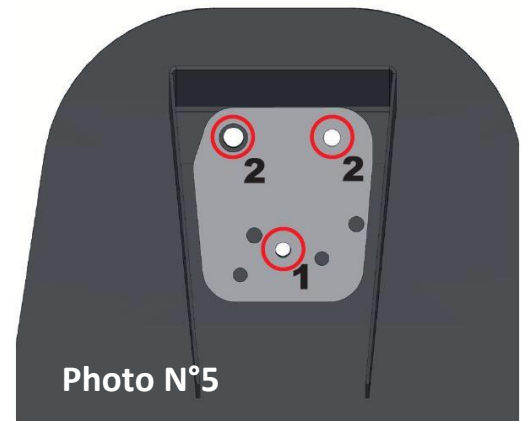


Photo N°4

Step 3 : Mounting the drilling plate inside the cabin, and aligns it at hole n° 1 (see the photo N°5)

Use a M8x16 or M8x20 bolt to fix the drilling plate.

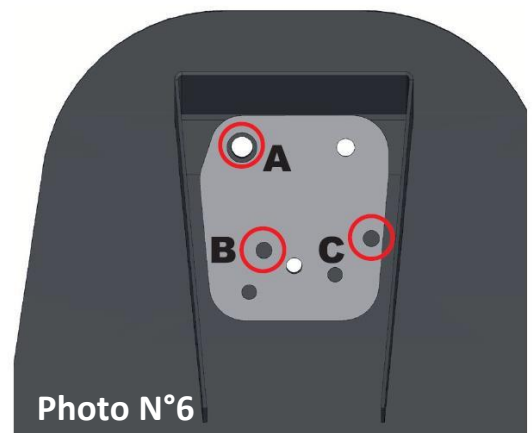
Align holes “2” so they are centered, as showed in the photo N°5



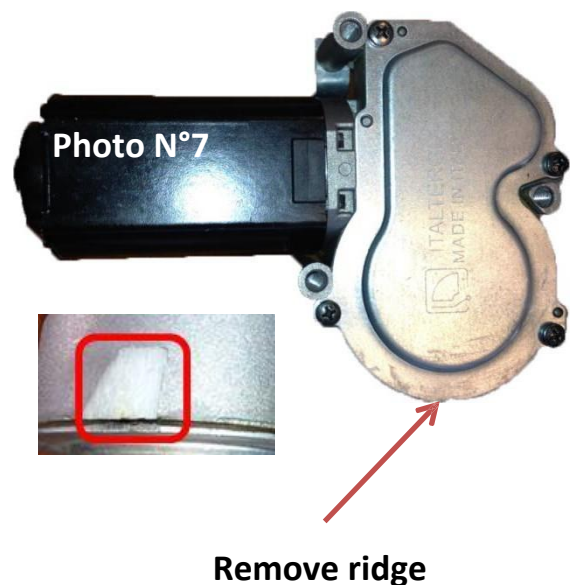
Step 4: Drill the “A” hole (drill bit of 16,5 mm) as showed in the photo N°6.

Drill the holes “B” and “C” (drill bit of 9 mm) as showed in the photo N°6

Remove the bolt from the hole N°1 and remove the plate.



Step 5 : Take the new wiper motor and remove the ridge (see the photo n°7) with a cutting tool

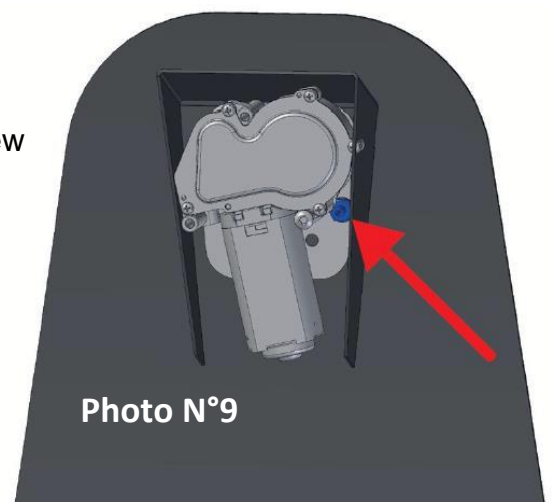


Step 6 : Install the new wiper motor.

Note: The drilling template has to be installed between the cabin frame and the wiper motor (see photo n°8)



Step 7 : Fix the wiper motor and drilling plate by screw as showed in the photo n°9



Step 8 : Change the wiper blades. Press the iron handle inside the wiper arm and remove the wiper lever (pulling it backwards). Repeat this step for the other wiper arm as showed on a photos.



Step 9 : Change the wiper arm, left to right and right to left. Press the iron handle inside the wiper arm and push in the wiper lever to the desired length. Repeat this step for the other arm, as shown in below photos.



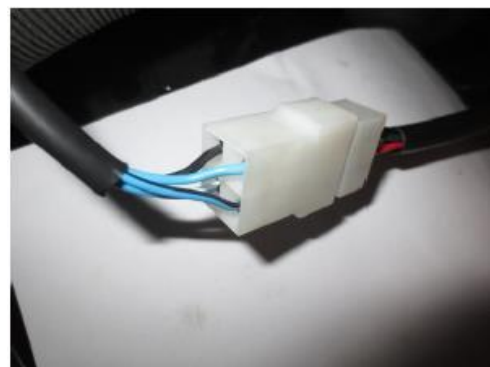
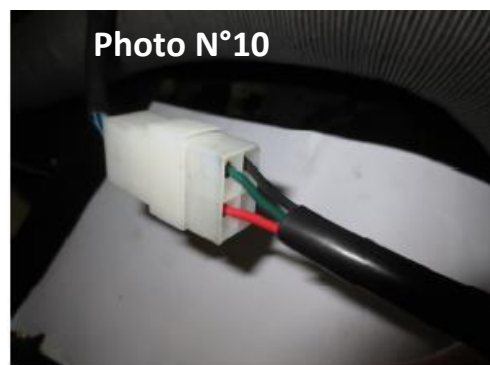
Step 10 : . Change wiring of the wiper motor connector. As showed in the photo n°10
The following wires must be connected for the operation of wiper motor :

-RED = Blue/Black

-BLACK = Black

-GREEN = Blue

Now Test the operation of the wiper mechanism



Step 11 : Install the steering unit and the steering column.
Fix the four bolts marked in the below potos.



Step 12 : With the new wiper motor the wiper blades stop on right side of front window..



C. Spare Part Information

N°	Part number	Description	Q.ty
1	W21CKT1276	Kit Wiper motor + Mounting plate	1

D. Warranty information

Parts: No
Labor: No
Mileage: No