

Kubota



Sales manual / improvements:

- U27-4 High spec vs U27-4



SMGB160819BLA

Kubota

Background



Background of development

Market demand:

- Have more space in the cabin for the operator (**from U25-3 to U27-4**)
- Have more AUX lines to use in easy way all attachments (**High Spec version of U27-4**)

Kubota answer to market:

- We have developed **new Kubota U27-4** with one the biggest cabin in this segment
- Proportional AUX1 & AUX2 are available in **High Spec version of U27-4**
- **High Spec version of U27-4** has also:
 - automatic kick down
 - single double-acting electric return control for AUX1



U27-4 High Spec improvements versus U27-4

Items	U27-4 High Spec	U27-4
AUX. circuit n° 1	-	Standard
Proportional & adjustable AUX. circuit n° 1	Standard	VAL option (not adjustable)
Proportional & adjustable AUX. circuit n° 2	Standard	Not available
Electric boom swing control	Standard	Not available
Réduction automatique de la vitesse (auto kick down)	Standard	Not available
Electric return to tank control for AUX1	Standard	Not available
Kit installation radio	Standard	VAL option
Cabin floor without pedals	Standard	Not available





Technical improvements



Proportional and adjustable circuit AUX1 & 2 FOR U27-4 High Spec



Trim AUX1

- On right joy-stick
- Allows you to manage the flow
- So the speed of movements



Potentiometer AUX1

- On the top of LCD monitor
- Allows you to manage the flow rate, which will be managed from the trim



Tilt bucket

- Easy operation
- Tilt speed is easier to handle



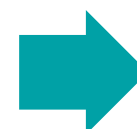
Trim AUX2

- On left joy-stick
- Allows you to manage the flow
- So the speed of movements



Potentiometer AUX2

- On the top of LCD monitor
- Allows you to manage the flow rate, which will be managed from the trim



Tilt rotator

- Easy operation
- Tilt and rotation speed is easier to handle



Cabin floor

U27-4



AUX1 controls ① is on pedal in the soil
Boom swing control ② is on the soil too

U27-4 (High Spec)



AUX controls 1 & 2 are on manipulators
Freed space for the feet of the operator
Getting on and off from machine is easier
This makes easier the cleaning operations



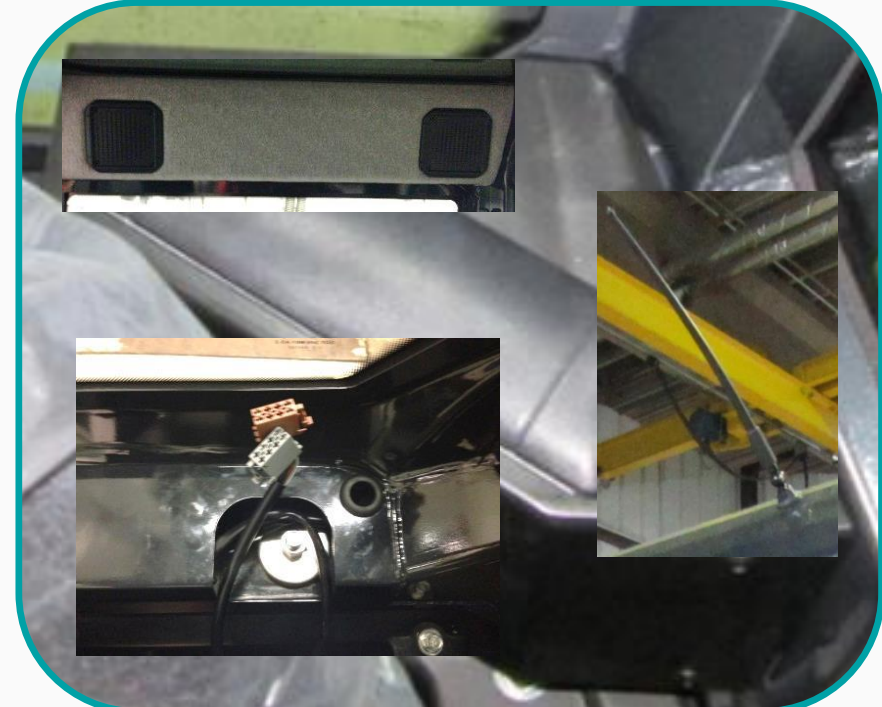
AUX N2 pipes routing and kit installation radio



Pipes are located inside the BOOM
Only the AUX. N2 pipes are positioned externally

Note:

These have been located to reduce all possible interference during the normal working phases



The radio installation kit comprising:

The wiring for the radio

Console

The antenna

The speakers

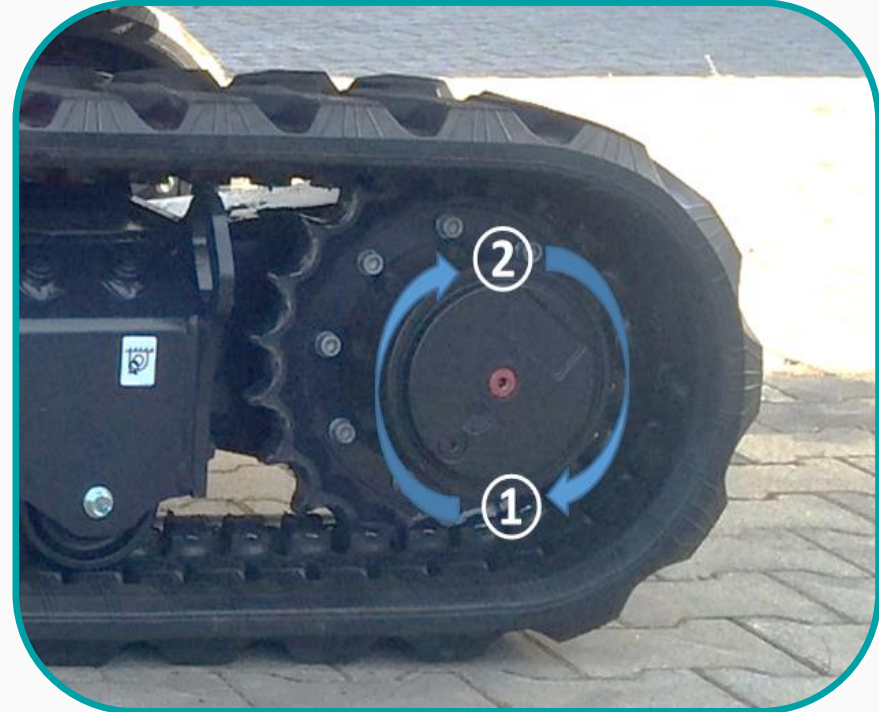


Electric return to tank control for AUX1, auto kick down.



Direct return AUX1 switch inside the cab

This switch on the right side panel allows you to switch from single-acting to double-acting



Auto kick down

Automatic speed change

The most appropriate speed in every situation
Possibility of locking the machine in first speed



For Earth, For Life

Kubota



Third Line Hydraulic
Switch Inside Cabin
A switch on the
side panel provides
convenient control of
Third Line Hydraulic
Direct Return.



Thank you for your attention!

