



Beyond 130





Sales training material

- New **KX060-5 / U56-5** versus:
 - Kubota KX057-4 / U55-4
- New **KX060-5 / U56-5** versus:
 - Yanmar SV60
 - Takeuchi TB260
 - Hitachi ZX55
 - CAT 305.5 E2CR



SMGB171016BLA



Presentation

**Par1. Comparison : KX060-5/U56-5
VS KX057-4/U55-4**

Part2. Comparison with competitor's machines

Part3. VAL overview



Part 2 :Comparison to competitors machine



Index of Part2:

Comparison to competitor machines

I . Introduction of competitor machines

II . Product evaluation

II -1 General performance

II -2 Operator space

II -3 Function/Equipment

II -4 Safety

II -5 Maintenance



Index of Part2:

Comparison to competitor machines

I . Introduction of competitor machines

II . Product evaluation

II -1 General performance

II -2 Operator space

II -3 Function/Equipment

II -4 Safety

II -5 Maintenance



I . Introduction of competitor machines



Tested machines

YANMAR

SV60



TAKEUCHI

TB260



CAT

305.5E2 CR



HITACHI

ZX55U-6



Over view of comparison result

RDL3 sales training Summary of evaluation

How to evaluate measured numbers (Kubota=5)	< 3%	5
	3% -5%	4 or 6
	5-10%	3 or 7
	10-15%	2 or 8
	> 15%	1 or 9

		KX060-5	SV60	TB260
General performance	Machine weight	5	5	5
	Engine horse power	5	3	5
	Digging force	5	5	3
	Lifting performance	5	9	8
	Working range	5	5	4
	Rear overhang	5	1	8
	Hydraulic matching	5	1	4
	AUX1/2 usability	5	3	5
	Noise	5	3	3
	Average	5	3.9	5

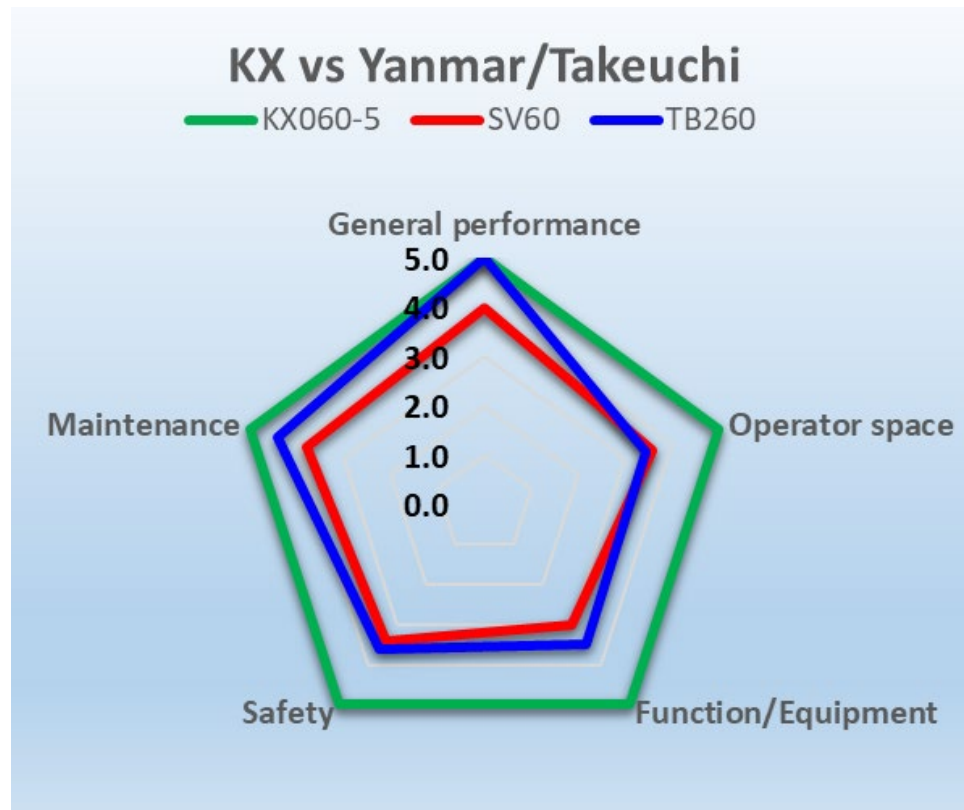
U56-5	ZX55U-6	305.5E2 CR	Point of evaluation
5	3	4	kg
5	1	3	kW
5	1	5	kN(Bucket)
5	2	7	kN(Stability, Side)
5	5	4	Digging radius GL+ Digging depth
5	4	1	mm
5	1	1	sec/3 cycle time
5	1	4	E.3rd line + 1, Adjustable flow + 1, AUX1 holding + 1
5	5	3	db
5	2.6	3.6	

Please refer to handouts for more details.



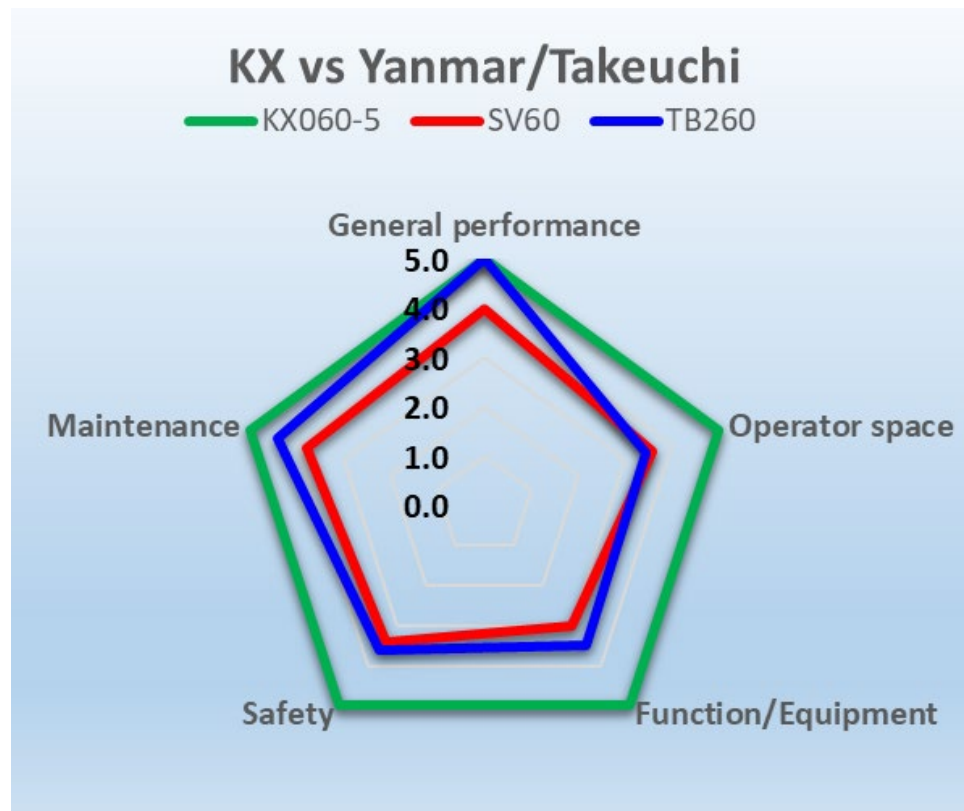
Over view of comparison result

KX060 vs Yanmar/Takeuchi



Over view of comparison result

KX060 vs Yanmar/Takeuchi



Main Kubota advantages

General performance:

Hydraulic matching and less Noise

Operator space:

Panel/console, visibility, foot space

Function/Equipment:

AUX usability, working light

Safety:

Seatbelt alert, holding valve STD, A/T STD

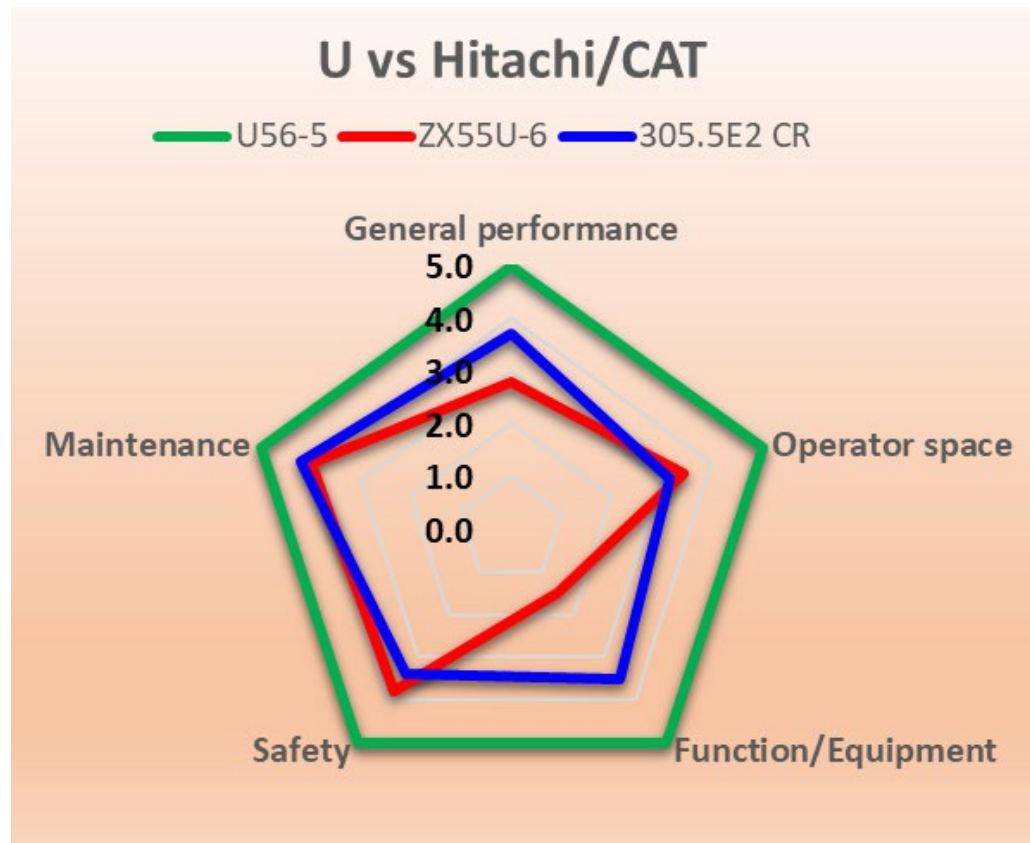
Maintenance:

Bonnet accessibility, refueling



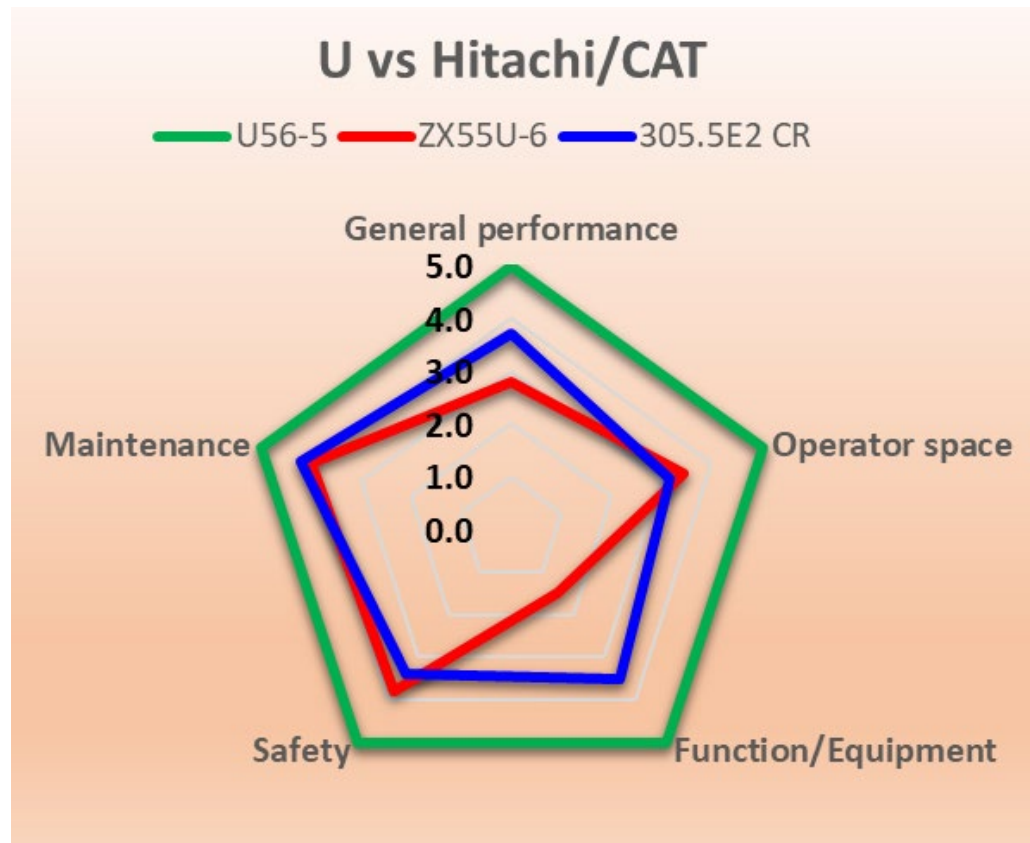
Overview of comparison result

U56 vs Hitachi/CAT



Overview of comparison result

U56 vs Hitachi/CAT



Main Kubota advantages

General performance:

Hydraulic matching, horse power, less Noise

Operator space:

Panel/console, visibility, foot space

Function/Equipment:

AUX usability, working light

Safety:

Seatbelt alert, holding valve STD, A/T STD

Maintenance:

Bonnet accessibility, refueling



Index of Part2:

Comparison to competitor machines

I . Introduction of competitor machines

II . Product evaluation

II -1 General performance

II -2 Operator space

II -3 Function/Equipment

II -4 Safety

II -5 Maintenance



II . Product evaluation



Index of Part2:

Comparison to competitor machines

I . Introduction of competitor machines

II . Product evaluation

II -1 General performance

II -2 Operator space

II -3 Function/Equipment

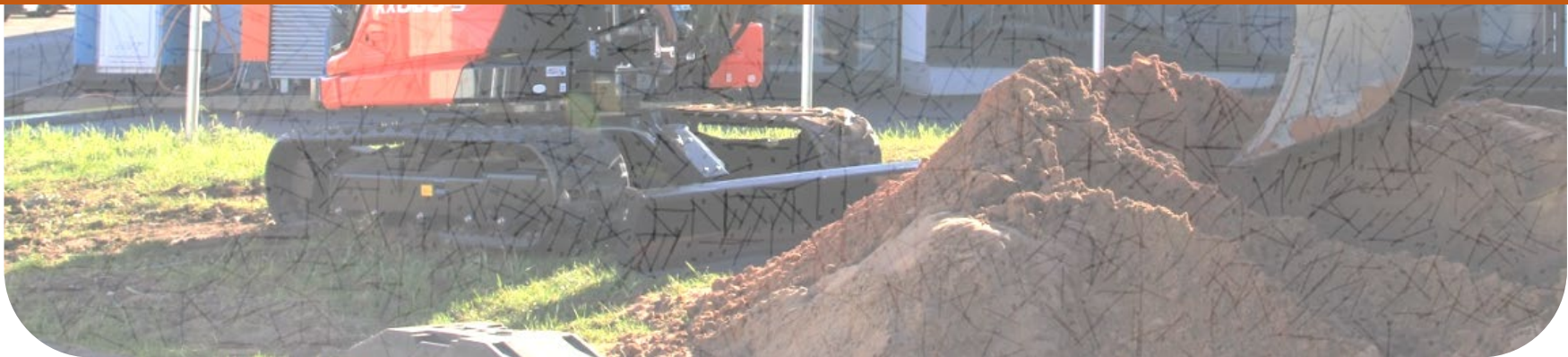
II -4 Safety

II -5 Maintenance



A close-up photograph of a red Kubota excavator's hydraulic arm and bucket, positioned against a bright, overexposed background. The Kubota logo is visible on the side of the arm.

II -1. General performance



Machine weight

Model version	KUBOTA KX060	Yanmar SV60	TAKEUCHI TB260	KUBOTA U56	Hitachi ZX55	CAT 305.5E2CR
Production country	Japan	Japan	Japan	Japan	Japan	
Tail swing	Conventional	Conventional	Conventional	Short tail	Zero tail	Short tail
Operating weight(cabin/rubber shoe)	5635	5635	5735	5595	4920 / 5140	5380 / 5423
Arm length (short/long)	mm	1820	1650 / 1940	1620 / 1780	1380 / 1690	1420 / 1820

* Actual rental machine is with additional counter weight (+200kg)



KX: Basically machine weight is similar as SV/TB.

U: U56 is the heaviest one.

ZX55 is clearly one size smaller than U56 and 305.5E2.



Engine & Hydraulic

Engine	Supplier		KUBOTA	Yanmar	Yanmar	KUBOTA	Yanmar	Caterpillar
	Type		V2607-CR-E5-BH2	4TNV84T-	4TNV86CT	V2607-CR-E5-BH2	4TNV88C	CAT C2.4
	Power(Net)	kW	35.0 (ISO9249)	32.6 (ISO?)	35.5 (ISO14396)	35,0 (ISO9249)	27.1 (ISO9249/SAEJ1349)	32.9 (ISO9249)
	Engine speed	rpm	2200	2200	2400	2200	2400	2200
	Cylinders	No.	4	4	4	4	4	-
Pump	HYD System		3P LS	3 P OP	3P OP	3P LS	1P LS	1P LS
	Type		var2,gear1	Var1(double piston),gear1	var2,gear1	var2,gear1	var1	-
	Displacement P1/P2	L/min	56.1×2	45.8x2	58.3×2	56.1×2	120	150
	Displacement P3	L/min	37	37	43.9	37	12.0 (pilot)	-

- **SV60's engine output and P1/P2 displacement is the weakest as conventional machines.**
→ Negative effect for machine speed.
- **ZX55's engine output is approximately 25% less than U56!**



Front Hydraulic matching

Model version			KUBOTA KX060	Yanmar SV60	TAKEUCHI TB260
Boom speed*	up/down	sec	2.7 / 3.2	2.8 / 3.1	2.8 / 3.1
Arm speed*	crowd/dump	sec	2.6 / 2.6	3.5 / 2.8	2.8 / 2.1
Bucket speed*	crowd/dump	sec	2.8 / 2.0	3.8 / 2.2	3.2 / 2.1
Swivel speed*	(L/R)	rpm	9.4	9.8	9.4

KUBOTA U56-5	Hitachi ZX55	CAT 305.5E2CR
2.8 / 3.1	2.6 / 2.9	2.3 / 3.0
2.6 / 2.8	3.0 / 2.5	3.2 / 2.6
2.7 / 1.9	2.5 / 1.9	2.8 / 1.9
9.2	8.9	9.8



As single movement of F/A and swivel, **Yanmar and **CAT** are clearly slow in Arm and swivel movement.**



Front Hydraulic matching

Model version			KUBOTA KX060	Yanmar SV60	TAKEUCHI TB260	KUBOTA U56-5	Hitachi ZX55	CAT 305.5E2CR
Boom speed*	up/down	sec	2.7 / 3.2	2.8 / 3.1	2.8 / 3.1	2.8 / 3.1	2.6 / 2.9	2.3 / 3.0
Arm speed*	crowd/dump	sec	2.6 / 2.6	3.5 / 2.8	2.8 / 2.1	2.6 / 2.8	3.0 / 2.5	3.2 / 2.6
Bucket speed*	crowd/dump	sec	2.8 / 2.0	3.8 / 2.2	3.2 / 2.1	2.7 / 1.9	2.5 / 1.9	2.8 / 1.9
Swivel speed*	(L/R)	rpm	9.4	9.8	9.4	9.2	8.9	9.8
Simultaneous movement* (Boom/arm/swivel)	3 times Dumping position - digging position	sec	24	33.5	25.3	24	31.9	30.5

(*)Actual measured figure

By simultaneous movement, **Kubota is surely best one among all machines.**

Always efficient and stress less working with Kubota!



Digging force

Brochure Spec

Model version			KUBOTA KX060	Yanmar SV60	TAKEUCHI TB260	KUBOTA U56-5	Hitachi ZX55	CAT 305.5E2CR
Breakout force	Bucket	kN	36.9	41.9	43.2	36.9	36.8* / 36.9	50.9
Brochure spec	Arm	kN	23.6	27.3* / 24.8	27.3* / 25.6	25.4	24.0* / 21.0	28.9* / 24.8

*Short arm

Bucket breakout force looks weaker than competitors as brochure spec. But...



Digging force

Brochure Spec

Model version			KUBOTA KX060	Yanmar SV60	TAKEUCHI TB260	KUBOTA U56-5	Hitachi ZX55	CAT 305.5E2CR
Breakout force	Bucket	kN	36.9	41.9	43.2	36.9	36.8* / 36.9	50.9
Brochure spec	Arm	kN	23.6	27.3* / 24.8	27.3* / 25.6	25.4	24.0* / 21.0	28.9* / 24.8

*Short arm



Bucket breakout force looks weaker than competitors as brochure spec. But...

KX060/U56 spec is based on “with Q/C condition”.



Digging force

Actual measured performance with Q/C

Model version			KUBOTA KX060	Yanmar SV60	TAKEUCHI TB260
Breakout force	Bucket	kN	36.9	41.9	43.2
Brochure spec	Arm	kN	23.6	27.3* / 24.8	27.3* / 25.6
Breakout force	Bucket	kN	36.1	35.5*	32.7*
result of measurement	Arm	kN	24.9	26.9*	27.8*

KUBOTA U56-5	Hitachi ZX55	CAT 305.5E2CR
36.9	36.8* / 36.9	50.9
25.4	24.0* / 21.0	28.9* / 24.8
36.1	30.5	37.2*
26	21.8	28.8*

*Short arm



Digging force

Actual measured performance with Q/C

Model version			KUBOTA KX060	Yanmar SV60	TAKEUCHI TB260
Breakout force	Bucket	kN	36.9	41.9	43.2
Brochure spec	Arm	kN	23.6	27.3* / 24.8	27.3* / 25.6
Breakout force	Bucket	kN	36.1	35.5*	32.7*
result of measurement	Arm	kN	24.9	26.9*	27.8*

KUBOTA U56-5	Hitachi ZX55	CAT 305.5E2CR
36.9	36.8* / 36.9	50.9
25.4	24.0* / 21.0	28.9* / 24.8
36.1	30.5	37.2*
26	21.8	28.8*

*Short arm



**Under the same condition,
Kubota machine is generally
stronger than competitors!**



Balance of stability, working range and rear overhang



Balance of stability, working range and rear overhang



- **These 3 factors effect to each other.**
- **Balance of the performance is important!**



Lifting force and stability

Model version		KUBOTA KX060	Yanmar SV60	TAKEUCHI TB260	KUBOTA U56	Hitachi ZX55	CAT 305.5E2CR
Lifting force(*)	kN	13.4	12.1	11.4	14.9	10.2	11
Static stability front(*)	kN	9.1	—	—	8.43	—	—
Static stability side(*)	kN	8.03	10	9.2	7.33	6.51	8

(*)Actual measured figure



As comparison with competitors,

Lifting force: Kubota is Best machine.
Stability : U56 is better than Hitachi.

Same stability as current machine must enough performance for customer requirement.



Working range

* "Under bar" shows the spec of machines which has been actually measured by KBT.

Model version		KUBOTA KX060	Yanmar SV60	TAKEUCHI TB260	KUBOTA U56	Hitachi ZX55	CAT 305.5E2CR
Max digging height (short arm/long arm)	mm	5660 / 5815	<u>5720</u> / 5900	<u>5835</u> / 5940	5670	5750 / <u>6000</u>	<u>5330</u> / 5590
Max dump height (short arm/long arm)	mm	4000 / 4155	<u>4280</u> / 4460	<u>4115</u> / 4220	4000	4070 / <u>4310</u>	<u>3820</u> / 4080
Max digging radius (short arm/long arm)	mm	6020 / 6255	<u>6135</u> / 6410	<u>6120</u> / 6270	6105	5960 / <u>6260</u>	<u>5790</u> / 6170
Max digging radius at GL (short arm/long arm)	mm	5880 / 6120	<u>5990</u> / 6265	<u>5975</u> / 6130	5965	5820 / <u>6130</u>	<u>5630</u> / 6020
Max digging depth (short arm/long arm)	mm	3625 / 3875	<u>3910</u> / 4200	<u>3735</u> / 3895	3630	3530 / <u>3830</u>	<u>3470</u> / 3870

VS TB/SV_(short arm): wider working range instead of stability.
VS CAT : wider working range even stability is almost same.



Rear overhang

Model version		KUBOTA KX060	Yanmar SV60	TAKEUCHI TB260	KUBOTA U56-5	Hitachi ZX55	CAT 305.5E2CR
Rear overhang(*)	mm	290	330 / 445(**)	265	85	0 / 105(**)	150

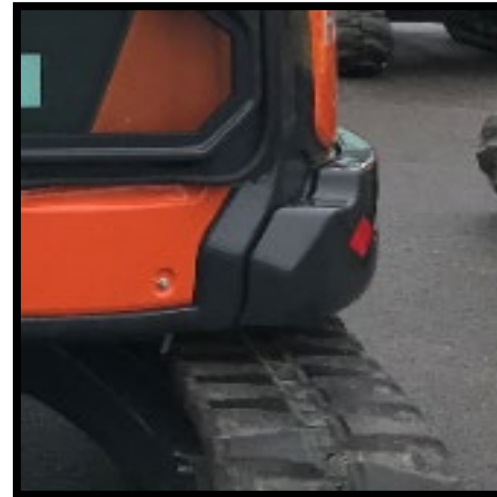
(*)Actual measured figure

(**) with add. counter weight

YANMAR



HITACHI



Yanmar: with add. weight, rear overhang becomes **150mm more than KX060.**
Hitachi : with add. weight, rear overhang becomes **20mm more than U56.**



Analysis of stability, working range and rear overhang



1. Stability

3. Rear overhang

2. Working range

KX060

1=Well accepted level for market

2=Better than others

3=Less or same than others

U56

1=Well accepted level for market

(Better than ZX55)

2=Well accepted level for market

3=Less than others



AUX 1 & 2

Model version			KUBOTA KX060	Yanmar SV60	TAKEUCHI TB260	KUBOTA U56-5	Hitachi ZX55	CAT 305.5E2CR
AUX1	Max. flow rate	l/min	75.0	82.8	102.2	75.0	No data	80.0
	Hydraulic pressure	Mpa	20.6	24.5	20.6	20.6	No data	
	Direct return to tank		Electrical	Yes	Electrical	Yes	Yes	Yes
	Proportional		Yes	Yes	Yes	Yes	Yes	Yes
	Adjustable (flow rate)		Yes	Yes	Yes	Yes	-	Yes
	Where make flow adjustment		Panel	Dial	Panel	Panel	-	Panel
	Holding function		Yes	Yes	Yes	Yes	-	
AUX2	Max. flow rate	l/min	37	No data	43.9	37	No data	25
	Hydraulic pressure	Mpa	19.1	No data	20.6	19.1	No data	
	Proportional		Yes	Yes	Yes	Yes	Yes	Yes
	Adjustable (flow rate)		Yes	Yes	Yes	Yes	-	Yes
	Where make flow adjustment		Panel	Dial	Panel	Panel	-	Panel

- **Kubota and Takeuchi have electrical third line return.**
- **Yanmar's AUX flow adjust dial can't offer pre-set function.**
- **Hitachi has no AUX flow adjustment and holding function.**



Noise

Brochure Spec

Model version			KUBOTA KX060	Yanmar SV60	TAKEUCHI TB260
Noise level	Operator Dynamic (LpA)(right / left)	dB	74	75.4	No data
	Outside(LwA)	dB	96	95	97 / (96.4)

KUBOTA U56	Hitachi ZX55	CAT 305.5E2CR
74	No data	No data
96	96	97

Actual measured Spec

Noise level	Operator Static (LpA)(right / left_ave)	dB	71.1	75.4	79.5
	Operator Dynamic (LpA)(right / left_ave)	dB	72.3	76.4	76.7

71.1	71.1	76.8
72	72.3	78.3

Kubota, absolutely less noise than others.

→ Let's check it in demo session.



Index of Part2:

Comparison to competitor machines

I . Introduction of competitor machines

II . Product evaluation

II -1 General performance

II -2 Operator space

II -3 Function/Equipment

II -4 Safety

II -5 Maintenance





II -2. Operator space





Digital panel & console



Digital panel



Kubota KX/U:

- Large screen
(7 inch)
- Full Color
- High resolution



Yanmar SV60:

- Small screen
- 2 Color
- Low resolution



TAKEUCHI TB260:

- Full Color



Hitachi ZX55:

- Small screen
- 2 Color
- Low resolution



CAT 305.5 E2CR:

- Small screen
- Full Color

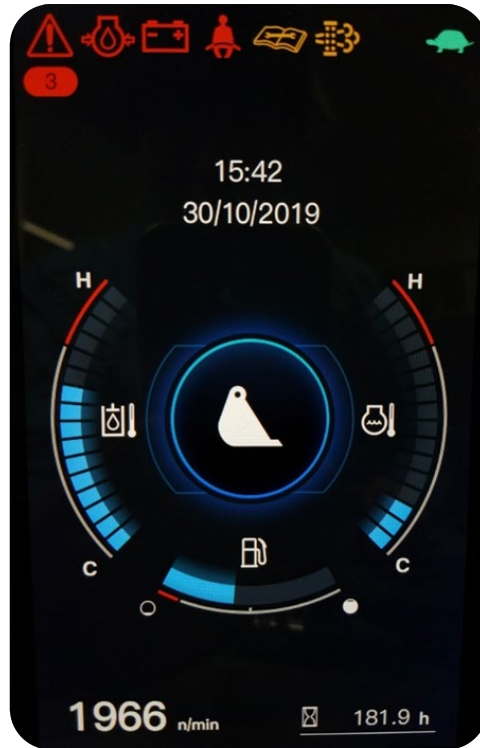
Large and modern.

Kubota panel gives the “high class” impression to operator.



Digital panel

Kubota



YANMAR



HITACHI



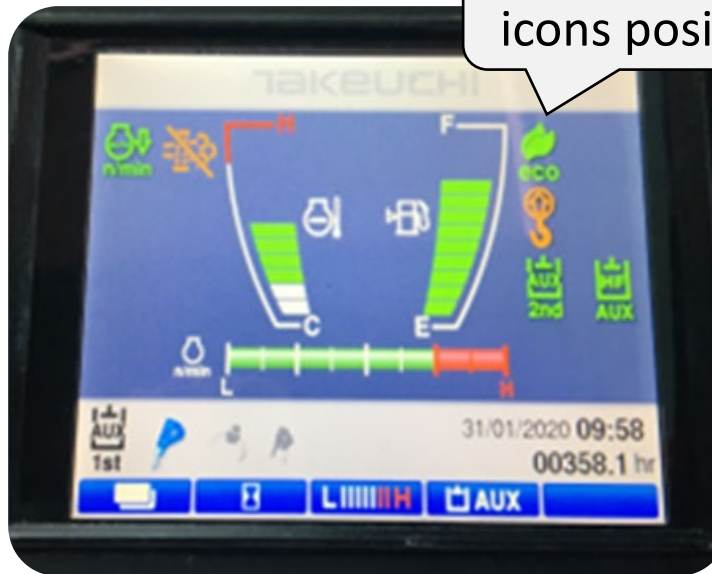
Digital panel

Kubota



Modern and practical UI

TAKEUCHI



Disorderly icons position

CAT



Narrow space on the screen



Kubota

Right console



Kubota KX/U:

- Concentrated key pad
(Easy access)



Yanmar SV60:

- Locker switch at right side



TAKEUCHI TB260:

- Locker switch at right side



Hitachi ZX55:

- Locker switch at right side



CAT 305.5 E2CR:

- Almost no switch
(Panel operation)

Kubota concentrated key pad at side of RH Joystick offers totally comfort access to main switches.



Right console

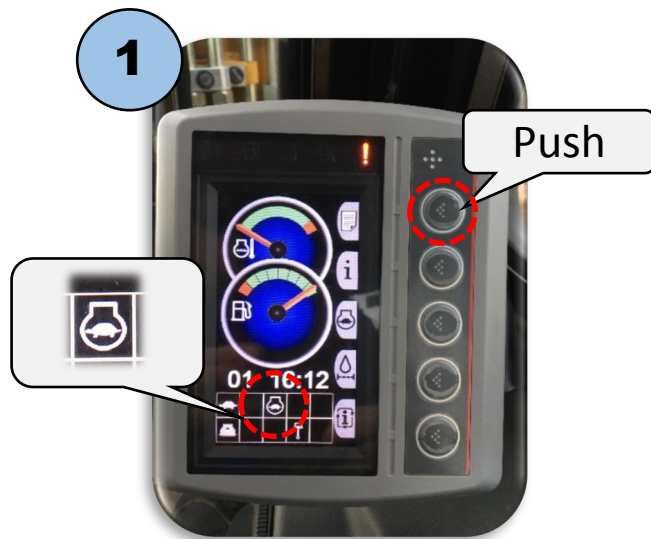


CAT 305.5E2 CR's functions will be activated through panel switch operation.

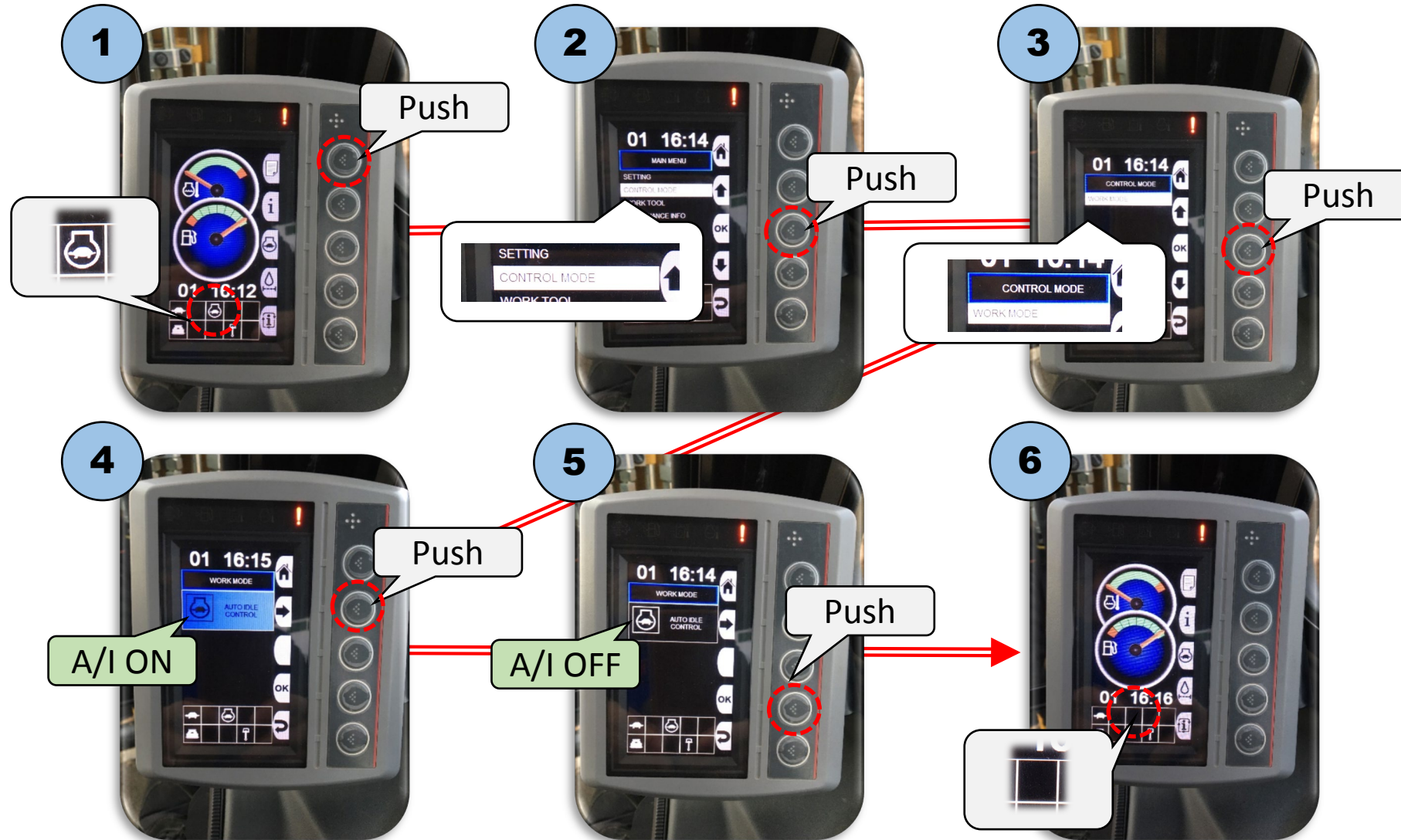
Let us see how it works.



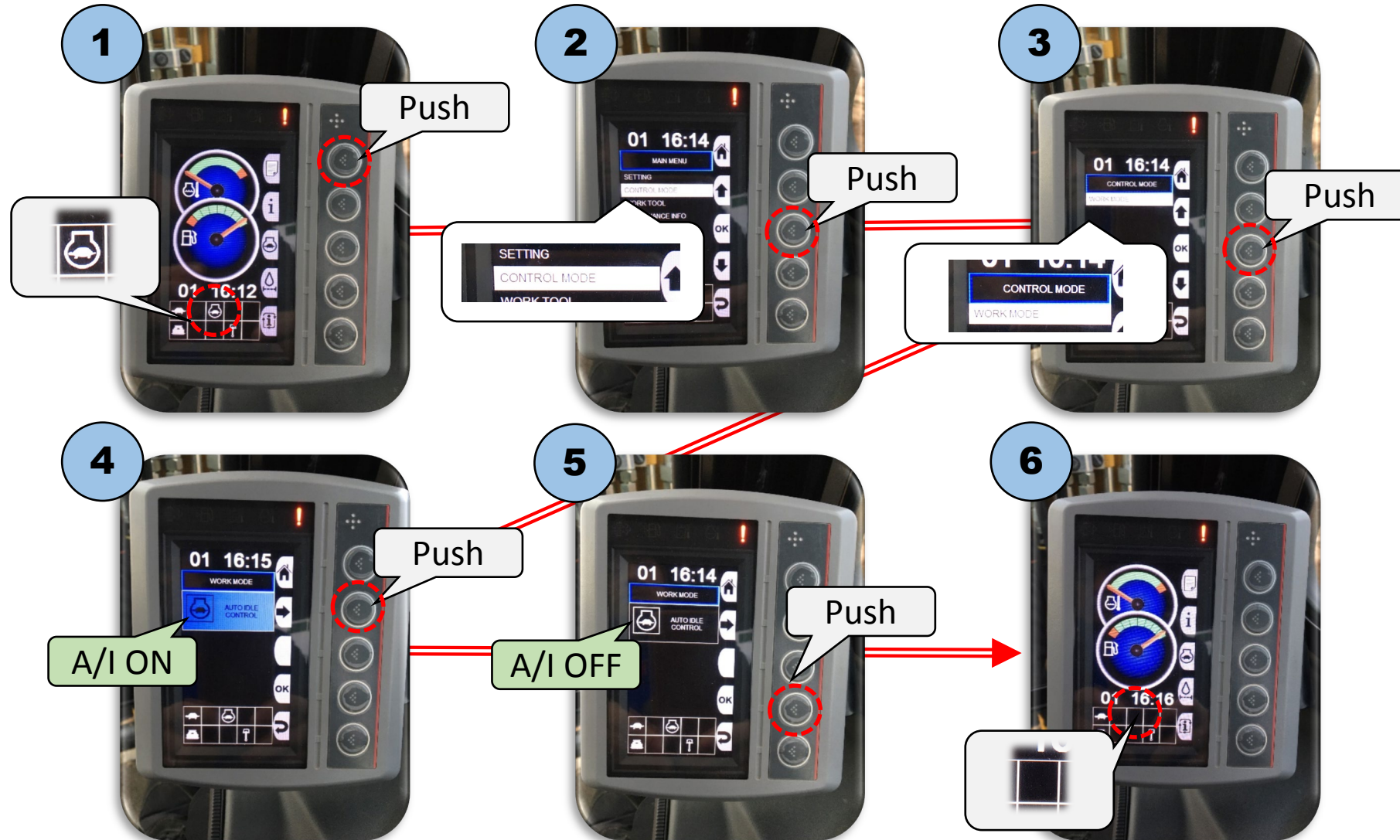
Right console (CAT A/I on/off)



Right console (CAT A/I on/off)



Right console (CAT A/I on/off)



**Push,
push,
push...**

**5 times
push for
just A/I
on/off!**



HITACHI



**RH Joystick
disturbs the
access to
panel.**

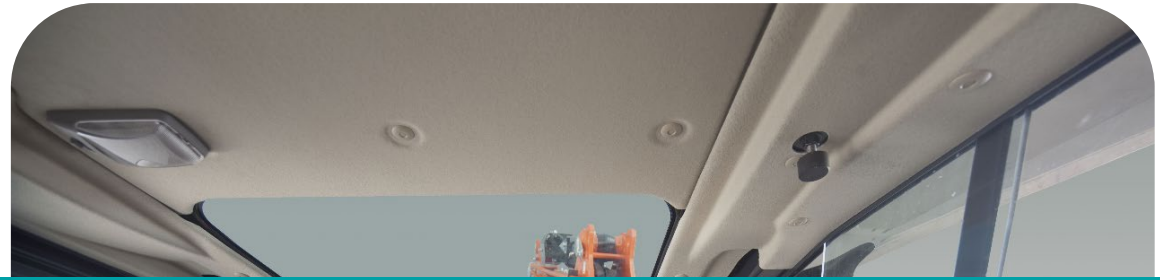
**= Bothering
and
dangerous.**

TAKEUCHI

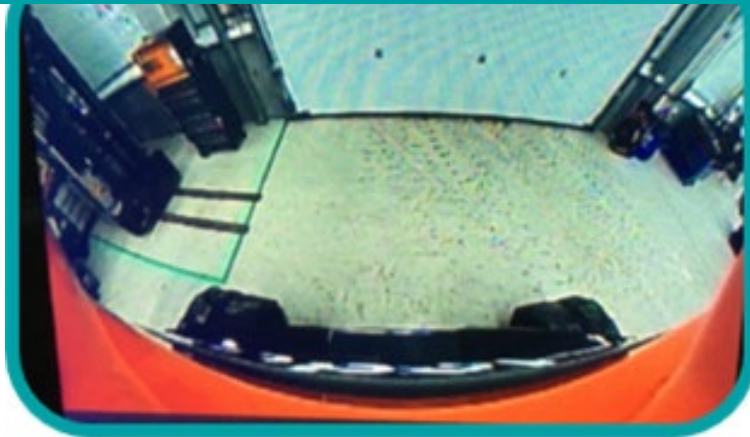


**Buttons on
panel is
really **hard**
to push!**





Visibility



Rear-view camera



Kubota KX/U:

**-Rear-view
camera OPT**

- Picture on
main panel



Yanmar SV60:

**-Rear-view
camera STD**

- Additional
display for
camera

OPT

TAKEUCHI TB260:

- Rear-view opt



Hitachi ZX55:

- No Rear-view

OPT

CAT 305.5 E2CR:

- Rear-view opt

- Hitachi offers no official rear-view camera.



Rear-view camera



Kubota KX/U:

-Rear-view camera OPT

- Picture on main panel



Yanmar SV60:

-Rear-view camera STD

- Additional display for camera

OPT

TAKEUCHI TB260:

- Rear-view opt



Hitachi ZX55:

- No Rear-view

OPT

CAT 305.5 E2CR:

- Rear-view opt

- **Hitachi offers no official rear-view camera.**
- **Yanmar uses 2nd large display for rear-view. → Is it nice?**



Rear-view camera

YANMAR

A/C
Condenser



Bad visibility to backward

Back seat



- **Yanmar rear-view camera is “Essential” to get enough visibility to backward!**



Rear-view camera

YANMAR



Kubota



- **Yanmar's** extra 2nd screen for rear-view **disturbs the front visibility.**
- **Kubota** uses 7 inch main panel for rear-view monitoring. It makes **better front visibility.**



Visibility Front



Kubota KX/U:

- Right bottom part is glass



Yanmar SV60:

- Right bottom part is glass
- Obstacle Display



TAKEUCHI TB260:

- Right bottom part is steel



Hitachi ZX55:

- Right bottom part is glass



CAT 305.5 E2CR:

- Right bottom part is steel

Thanks to glass part at RH window, dozer and crawler edges are easily visible from CAB seat in Kubota. (And Hitachi)



Visibility Front

Kubota



YANMAR



TAKEUCHI





Seat & comfort



Seat



Kubota KX/U:

- Double adjust
- Air suspension



Yanmar SV60:

- Single adjust
- Air suspension



TAKEUCHI TB260:

- Single adjust



Hitachi ZX55:

- Single adjust



CAT 305.5 E2CR:

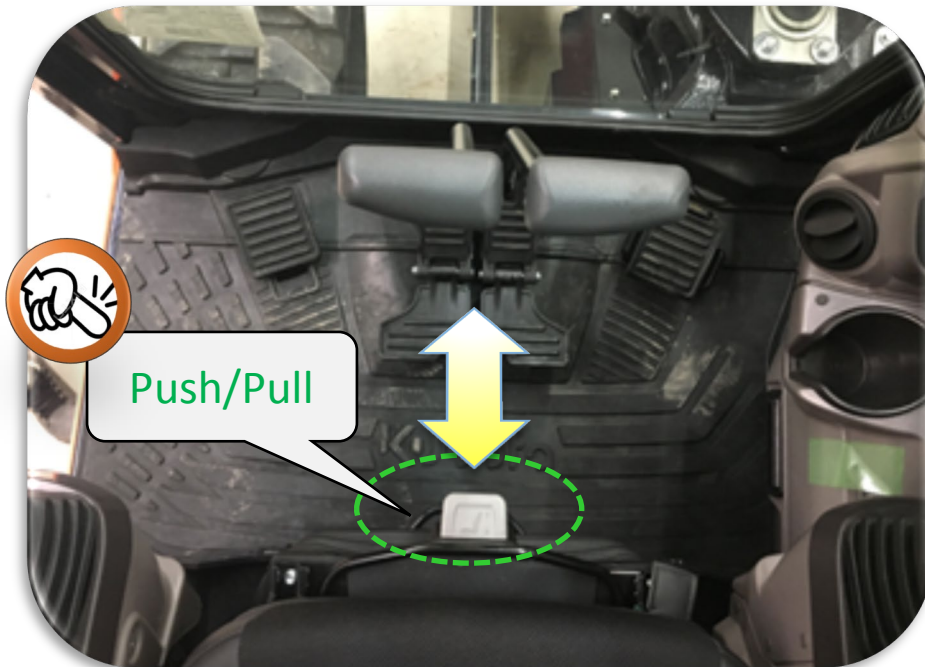
- Single adjust

Only Kubota offers the combination of “Double adjustable console” and “Air suspension seat”.



How to adjust the suspension

Kubota



TAKEUCHI

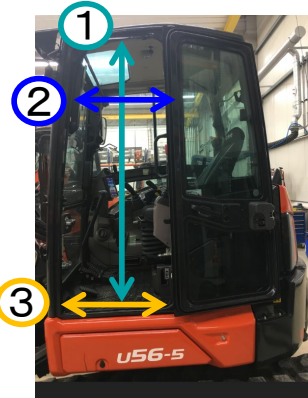




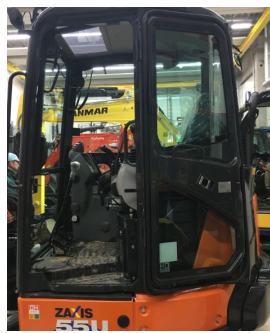



Kubota: doesn't need to rotate the lever many times by hand to adjust the weight.

Just push/pull the lever, seat will be adjusted electrically.



Cabin entrance space

Model version			KUBOTA KX060	Yanmar SV60	TAKEUCHI TB260	KUBOTA U56	Hitachi ZX55	CAT 305.5E2CR
								
①	Total entrance height	mm	1460	1518 ✓	1520 ✓	1460 ✓	1446	1375
②	At less 30cm from above	mm	594	648 ✓	516	485	504 ✓	455
③	Bottom tread	mm	724 ✓	694	603	583 ✓	454	540

KX: The widest bottom tread = easy step into CAB.

U : The biggest entrance space among short tail machines.



Cabin foot space

Kubota



YANMAR



Yanmar has big entrance step.



Cabin foot space

Kubota



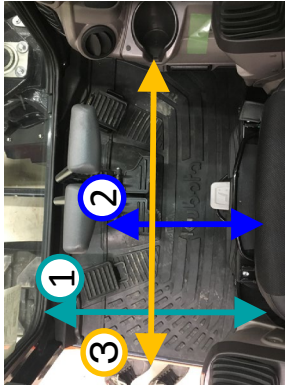




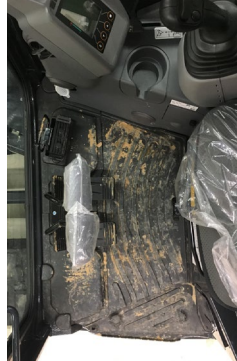
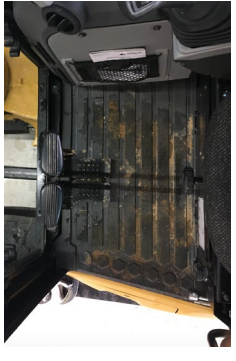
YANMAR



**Yanmar has big entrance step.
But it causes the limited foot space!**



Cabin foot space

Model version			KUBOTA KX060	Yanmar SV60	TAKEUCHI TB260	KUBOTA U56	Hitachi ZX55	CAT 305.5E2CR
								
①	Length : seat support to CAB frame	mm	629	593	519	530	522	526
②	Length : seat support to travel lever	mm	494	485	410	398	382	387
③	Width : Entrance to right wall limit usable space.	mm	919	756	952	919	833	709

KX/U offer the widest foot space for operator.
Absolutely comfort and idle for long time operation.



Air flow volume

Model version			KUBOTA KX060	Yanmar SV60	TAKEUCHI TB260	KUBOTA U56	Hitachi ZX55	CAT 305.5E2CR
①	Air flow	m/s	17.9	13.9	15.4	19.1	8.2	15.7

Measurement condition:

Average of 2 inlets which send the air to operator's face.



KX060 and U56 improved A/C(Heater) air flow volume offers the most comfortable operator environment in this class machines.

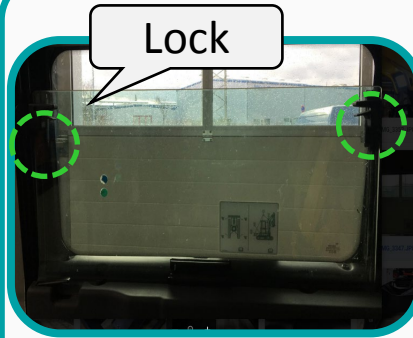


Removable front lower window with holding location



Kubota KX/U:

- Removable
- Holding location at left side



Yanmar SV60:

- Removable
- Holding location at rear side



TAKEUCHI TB260:

- Removable
- Holding location at left side



Hitachi ZX55:

- Removable
- No holding location



CAT: 305.5 E2CR

- Removable
- No holding location

- Hitachi/CAT has no space for holding lower window.



Index of Part2:

Comparison to competitor machines

I . Introduction of competitor machines

II . Product evaluation

II -1 General performance

II -2 Operator space

II -3 Function/Equipment

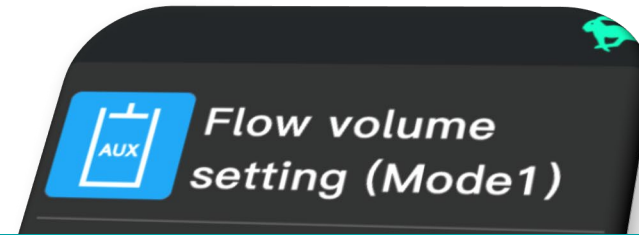
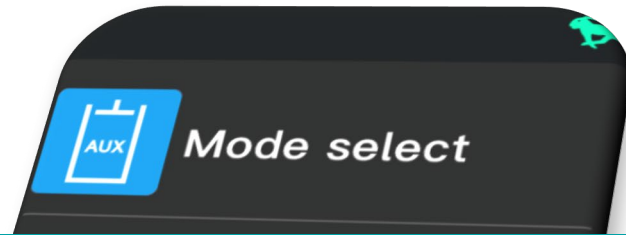
II -4 Safety

II -5 Maintenance

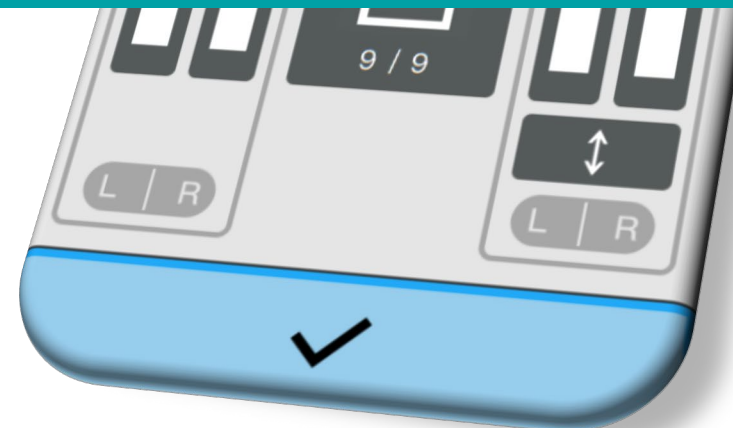


II -3. Function/equipment

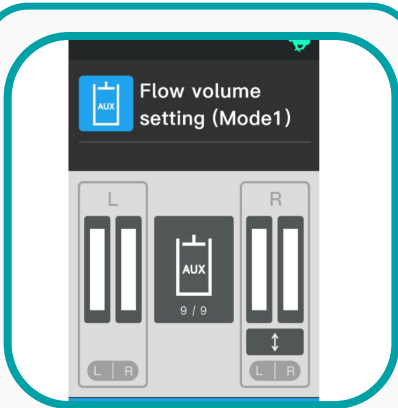




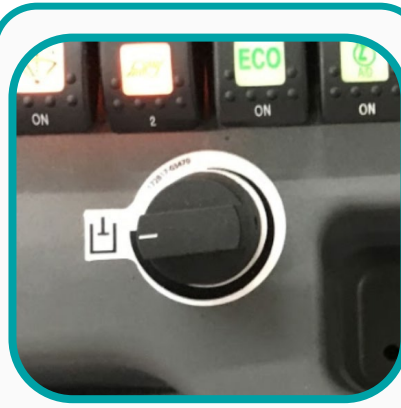
AUX control



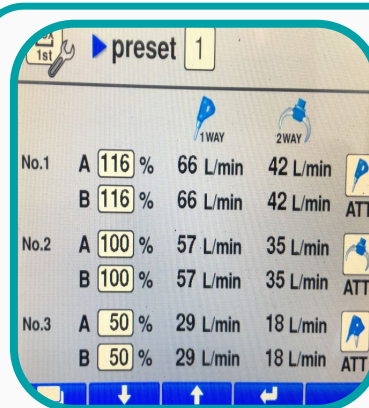
AUX flow rate adjustment



Kubota KX/U:
- Panel



Yanmar SV60:
 - Dial



TAKEUCHI TB260:
- Panel



Hitachi ZX55:
 - Just High/Low

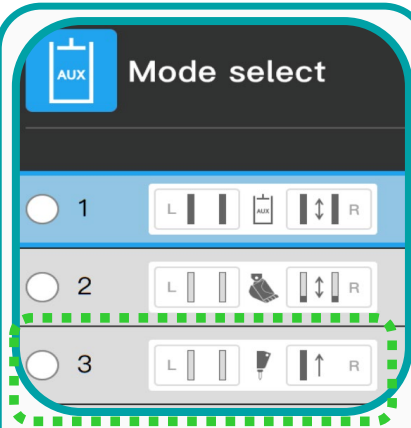


CAT 305.5 E2CR:
- Panel

- Hitachi has only High/Low adjustment even for 5t machine.
- Yanmar's dial adjustment can not realize AUX flow preset.

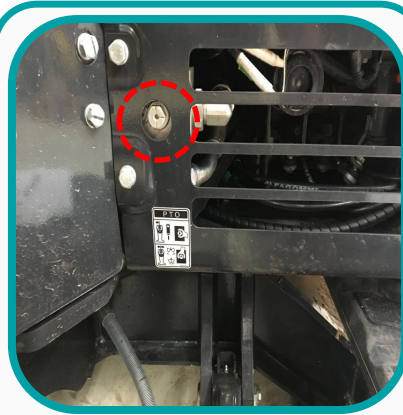


AUX1 third line hydraulic return



Kubota KX/U:

- Electrical
third line



Yanmar SV60:

- Mechanical
open/close
with tool



TAKEUCHI TB260:

- Electrical
third line



Hitachi ZX55:

- Mechanical
open/close
with tool



CAT 305.5 E2CR:

- Mechanical
open/close by
hand

Nobody wants to open/close third line hydraulic return with tool.

This structure leads the breaker operation w/o third line open.

Yanmar and Hitachi are far away from “Tool carrier”.



A photograph of a Kubota vehicle's front end at night. Two bright, rectangular working lights are mounted on the roof of the cab, casting a strong glow. The background is dark. A teal banner with the text 'Working light' is overlaid on the center of the image.

Working light



LED Working light



Kubota KX/U:

CAB : **STD**

BOOM: **STD**



Yanmar SV60:

CAB : **STD**

Boom: OPT



TAKEUCHI TB260:

CAB : OPT

Boom: OPT



Hitachi ZX55:

CAB : OPT

Boom: OPT



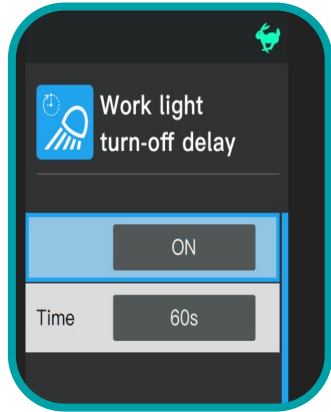
CAT 305.5 E2CR:

No option

Only Kubota sets the complete LED light as standard.



Work light turn off delay



Kubota KX/U:

- **STD**

(30-120 sec adjustable)



Yanmar SV60:

- No function



TAKEUCHI TB260:

- No function



Hitachi ZX55:

- No function



CAT 305.5 E2CR:

- **Option**

(10-99 sec adjustable)

Work light turn off delay helps more safety getting off from CAB and return to operators car. (Only Kubota has it as STD)



Index of Part2:

Comparison to competitor machines

I . Introduction of competitor machines

II . Product evaluation

II -1 General performance

II -2 Operator space

II -3 Function/Equipment

II -4 Safety

II -5 Maintenance

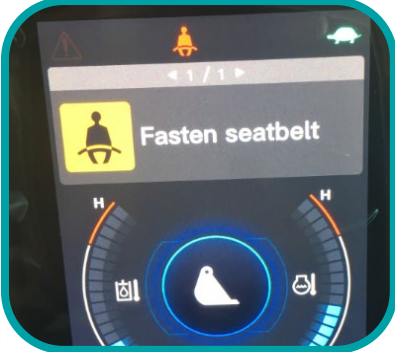




II -4. Safety



seatbelt alert



Kubota KX/U:

- With seatbelt alert
- Orange seat belt



Yanmar SV60:

- No alert



TAKEUCHI TB260:

- No alert



Hitachi ZX55:

- No alert



CAT 305.5 E2CR:

- No alert

Only Kubota offers seatbelt + orange seatbelt.
We effort the best for operator's safety.



Holding valves



Kubota KX/U:

- Boom: STD
- Arm : STD



Yanmar SV60:

- Boom: OPT
- Arm : OPT



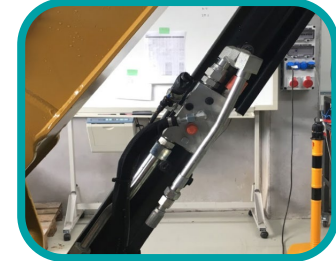
TAKEUCHI TB260:

- Boom: STD
- Arm: OPT



Hitachi ZX55:

- Boom: STD
- Arm : OPT



CAT 305.5 E2CR:

- Boom: OPT
- Arm : OPT



Only Kubota has Boom & Arm holding valves as STD.
No compromise for safety operation.



Holding valve protection



Kubota KX/U:
- With protection



Yanmar SV60:
- With protection



TAKEUCHI TB260:
- No protection



Hitachi ZX55:
- With protection

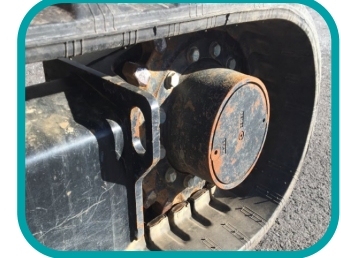


CAT 305.5 E2CR:
- No protection

Operator don't have to care the risk of damage to holding valve while working in Kubota.



Tie down points



Kubota KX/U:

- Top frame
(Front/Rear)

Yanmar SV60:

- Track frame
(Side)
- Dozer

TAKEUCHI TB260:

- Track frame
(Side)
- Dozer

Hitachi ZX55:

- Track frame
(Side)
- Dozer

CAT 305.5 E2CR:

- Track frame
(Side)
- Dozer

Tie down points at top frame secure more safety transport.



Engine exhaust gas pipe



Kubota KX/U:
- Upward



Yanmar SV60:
- Downward



TAKEUCHI TB260:
- Upward



Hitachi ZX55:
- Upward



CAT 305.5 E2CR:
- Upward

The exhaust gas will directly hit to the worker in the trench in Yanmar SV60.



Anti theft



Kubota KX/U:

- **STD**

OPT

Yanmar SV60:

- OPT

OPT

TAKEUCHI TB260:

- OPT

OPT

Hitachi ZX55:

- OPT

OPT

CAT 305.5 E2CR:

- OPT

Only Kubota offers Anti theft system as standard.



Index of Part2:

Comparison to competitor machines

I . Introduction of competitor machines

II . Product evaluation

II -1 General performance

II -2 Operator space

II -3 Function/Equipment

II -4 Safety

II -5 Maintenance



A Kubota excavator is shown from a side-rear perspective. The machine is primarily black with orange accents on the boom and arm. The operator's cab is visible on the left. The background is plain white.

II -5. Maintenance



Bonnet open



Kubota KX060:

Rear: **Vertical**

Side: **Vertical**



Yanmar SV60:

Rear: Horizontal

Side: Horizontal



TAKEUCHI TB260:

Rear: **Vertical**

Side: **Vertical**



Hitachi ZX55:

Rear: **Vertical**

Side: Horizontal



CAT 305.5 E2CR:

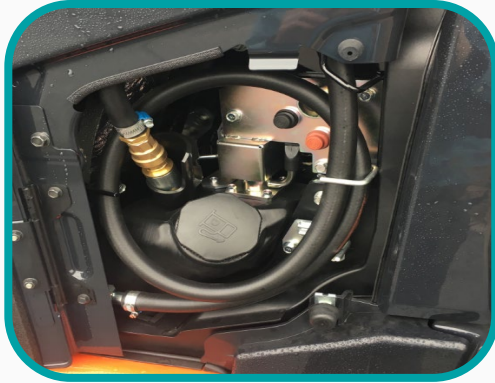
Rear: Horizontal

Side: **Vertical**

Kubota & Takeuchi realize the both of serviceability and space saving. (Horizontal opening takes many place in fleet)



Refueling



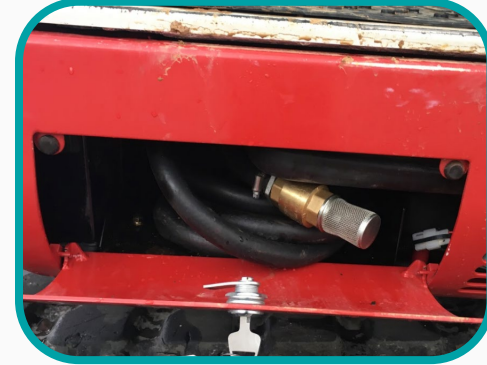
Kubota KX060:

- Electrical fuel pump
- Fuel alert buzzer



Yanmar SV60:

- Electrical fuel pump
- No Fuel alert buzzer



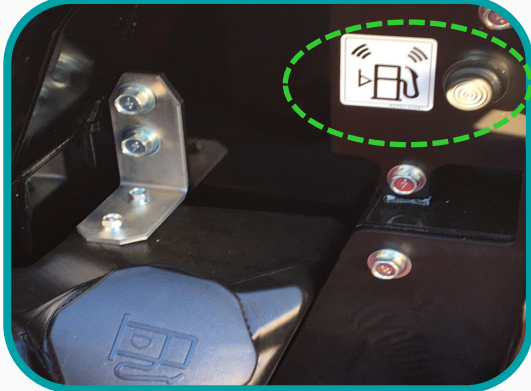
TAKEUCHI TB260:

- Electrical fuel pump
- No Fuel alert buzzer

- **Electrical fuel pump is standard for 5t conventional machine.**
- **Just only Kubota offers the combination with alert buzzer.**



Refueling



Kubota U56:

- Fuel alert buzzer



Hitachi ZX55:

- No fuel alert buzzer



CAT 305.5E2CR:

- No fuel alert buzzer

As short tail machines, **only Kubota has fuel alert buzzer.**
It makes easy and safety refueling.



Cleaning radiator & oil cooler



Kubota KX/U:

- 1 layer
- Rotatable
AC condenser



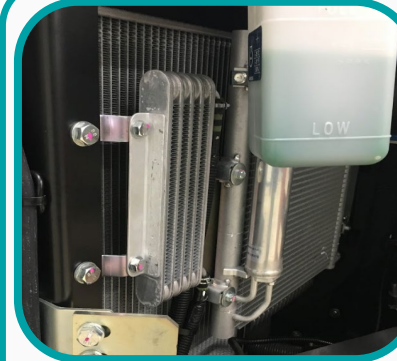
Yanmar SV60:

- 2 layers



TAKEUCHI TB260:

- 1 layer
- Rotatable
AC condenser
(Hit to air filter)



Hitachi ZX55:

- 1 layer



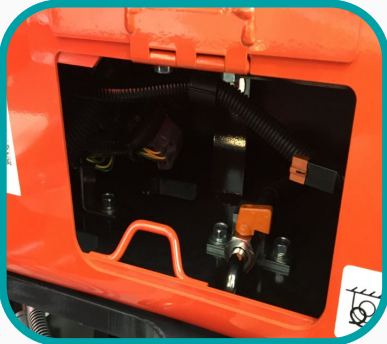
CAT 305.5 E2CR:

- 1 layer
- * No AC condenser

Kubota's unique rotatable A/C condenser realizes easy cleaning for radiator & oil cooler.



Drain water from the fuel tank



Kubota KX/U:

- No swivel
- No tool
- Easy access



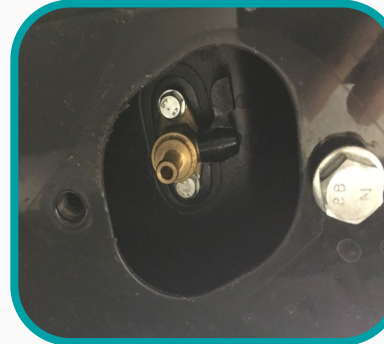
Yanmar SV60:

- Swivel
- Plug



TAKEUCHI TB260:

- Swivel
- No tool



Hitachi ZX55:

- Swivel
- No tool



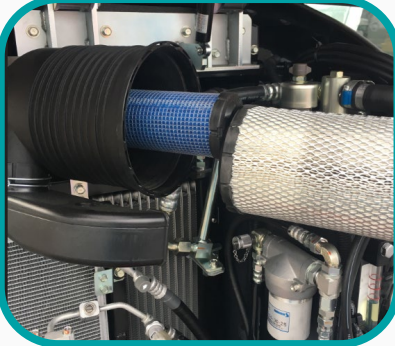
CAT 305.5 E2CR:

- Swivel
- Plug

Operator doesn't need much time for water drain in **Kubota, it leads the proactive maintenance by customer self.**

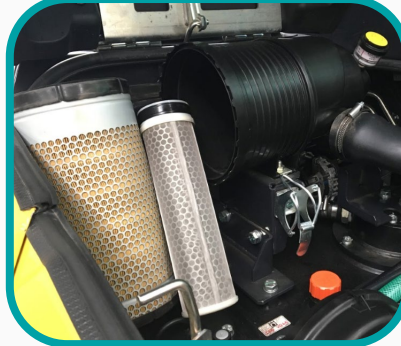


Air filter



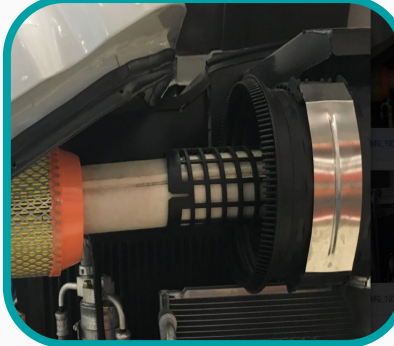
Kubota KX/U:

- Double element



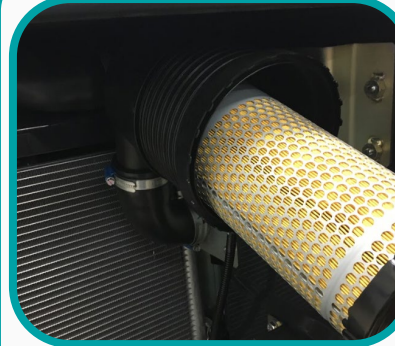
Yanmar SV60:

- Double element



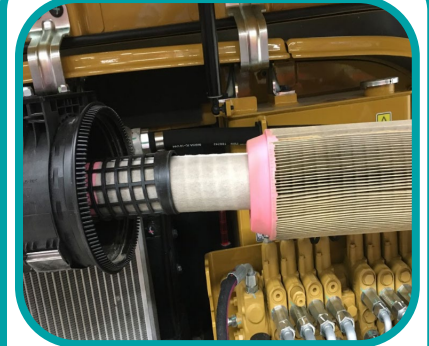
TAKEUCHI TB260:

- Double element



Hitachi ZX55:

- **Single element**



CAT 305.5 E2CR:

- Double element

Hitachi has cheap **single element** air filter.



YANMAR



TAKEUCHI



Summary



HITACHI



Summary (vs Yanmar SV60)

KX060 vs Yanmar SV60

Main Kubota advantages

YANMAR



General Performance:

- Hydraulic matching
- Rear overhang
- Less Noise

Operator space:

- Panel/console
- Visibility (Front)
- Foot space
- A/C performance

Function/Equipment:

- AUX usability
- LED working light STD

Safety:

- Seatbelt alert
- Holding valve STD
- Tie down points at top frame
- Exhaust gas pipe direction
- Anti theft STD

Maintenance:

- Bonnet accessibility
- Easy refueling
- Easy access for oil cooler/radiator
- Convenient water drain from fuel tank



Summary (vs Takeuchi TB260)

KX060 vs Takeuchi TB260

Main Kubota advantages

TAKEUCHI



General Performance:

- Digging force
- Working range
- Less Noise

Operator space:

- Panel/console
- Visibility (Front)
- Air suspension seat
- A/C performance

Function/Equipment:

- LED working light STD

Safety:

- Seatbelt alert
- Holding valve STD
- Tie down points at top frame
- Anti theft STD

Maintenance:

- Easy refueling
- Easy access for oil cooler/radiator
- Convenient water drain from fuel tank



Summary (vs Hitachi ZX55U-6)

U56 vs Hitachi ZX55U-6

Main Kubota advantages

HITACHI



General Performance:

- Machine weight
- Engine horse power
- Digging force
- Lifting performance
- Hydraulic matching

Operator space:

- Panel/console
- Foot space
- Visibility (Front)
- Air suspension seat
- A/C performance

Function/Equipment:

- AUX usability
- LED working light STD

Safety:

- Seatbelt alert
- Holding valve STD
- Tie down points at top frame
- Anti theft STD

Maintenance:

- Bonnet accessibility
- Easy refueling
- Convenient water drain from fuel tank



Summary (vs CAT 305.5E2 CR)

U56 vs CAT 305.5E2 CR



Main Kubota advantages

General Performance:

- Hydraulic matching
- Rear overhang
- Less Noise

Operator space:

- Panel/console
- Visibility (Front)
- Air suspension seat
- Foot space
- A/C performance

Function/Equipment:

- AUX usability
- LED working light STD

Safety:

- Seatbelt alert
- Holding valve STD
- Tie down points at top frame
- Anti theft STD

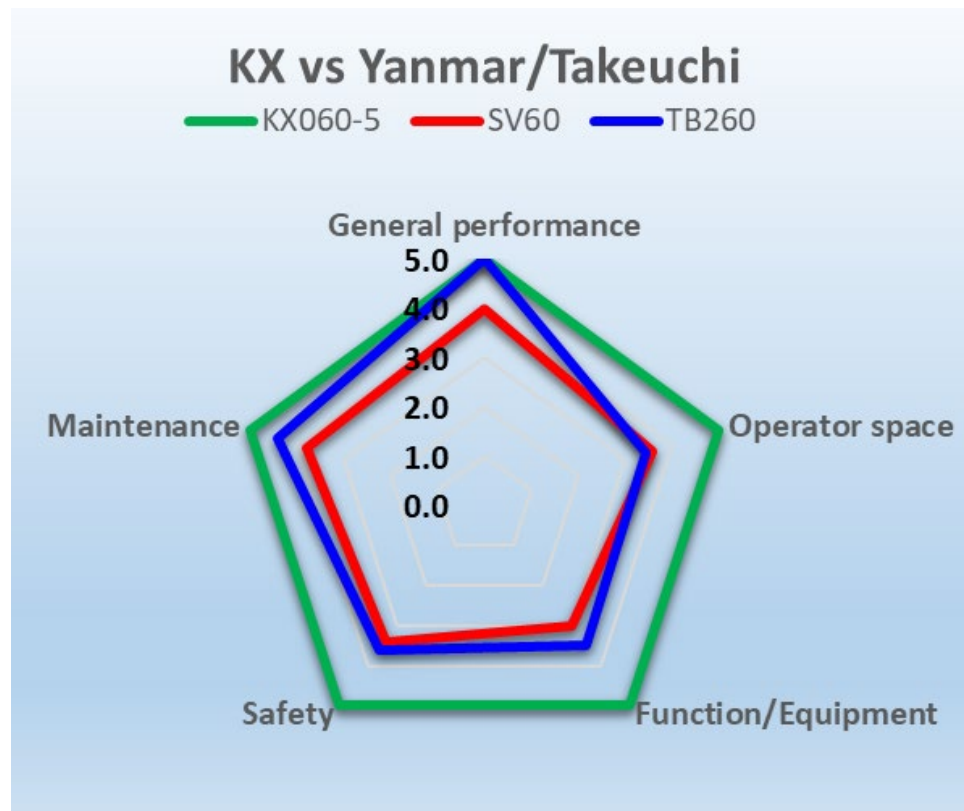
Maintenance:

- Bonnet accessibility
- Easy refueling
- Convenient water drain from fuel tank



Over view of comparison result

KX060 vs Yanmar/Takeuchi



Main Kubota advantages

General performance:

Hydraulic matching and less Noise

Operator space:

Panel/console, visibility, foot space

Function/Equipment:

AUX usability, working light

Safety:

Seatbelt alert, holding valve STD, A/T STD

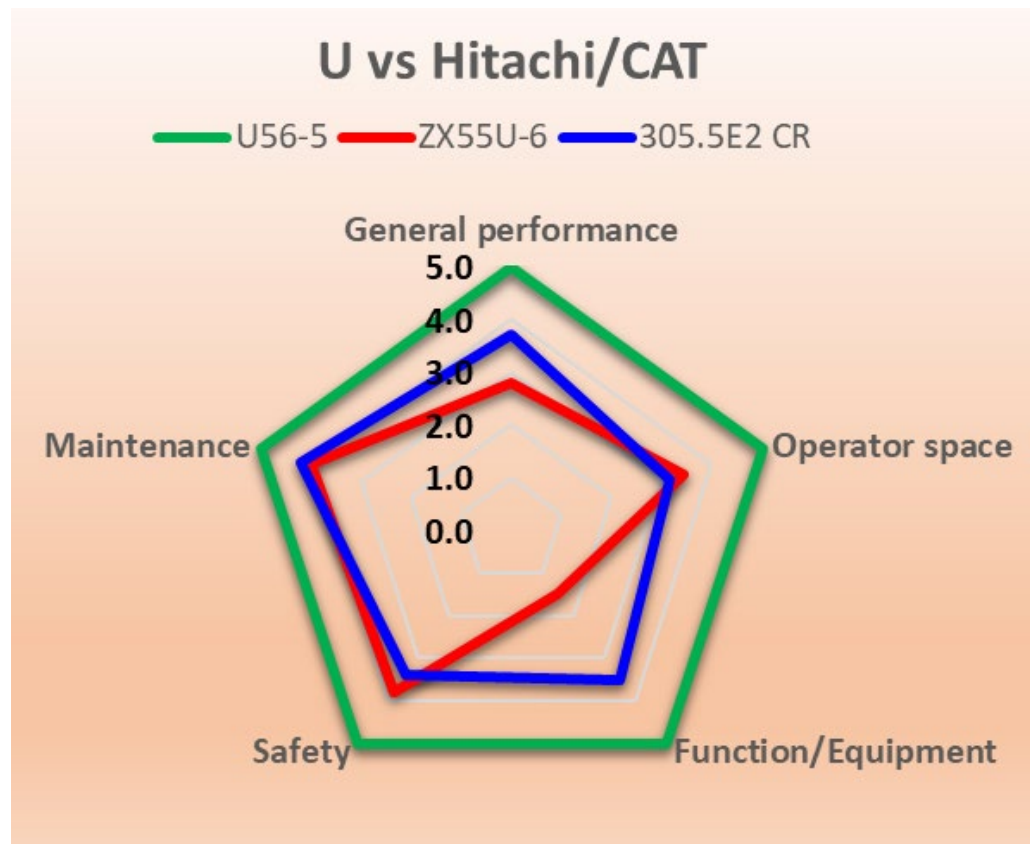
Maintenance:

Bonnet accessibility, refueling



Overview of comparison result

U56 vs Hitachi/CAT



Main Kubota advantages

General performance:

Hydraulic matching, horse power, less Noise

Operator space:

Panel/console, visibility, foot space

Function/Equipment:

AUX usability, working light

Safety:

Seatbelt alert, holding valve STD, A/T STD

Maintenance:

Bonnet accessibility, refueling

For Earth, For Life
Kubota



Kubota