



Kubota

Bulletin No : CM23-007-KEEN
 Date : Mar. 02, 2023
 Replace :
 Ref.PB No :

SUBJECT :
SWIVEL JOINT LEAKAGE

Marco Carugati

Kubota Europe S.A.S

MODEL : KX016-4 AND KX019-4

AFFECTED SERIAL NUMBER :

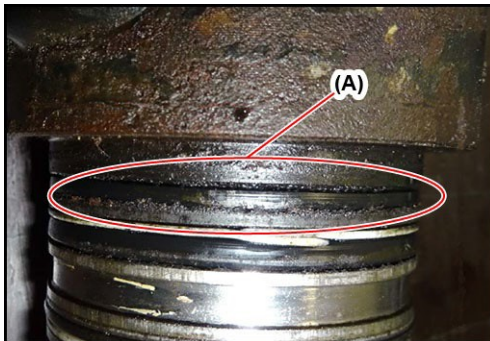
KX016-4 EU ; UP TO # 73436

KX019-4 EU ; UP TO # 78777

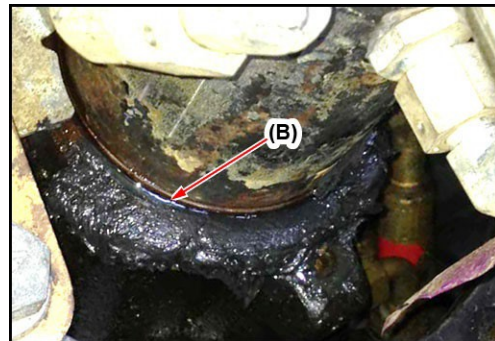
AFFECTED COUNTRY : KBD, KE AND KUK

REASON FOR ISSUE :

Cases of leaking swivel joints have been reported. Investigations revealed, that the sealing between the body and the shaft of the swivel joint was at the same level as the swivel frame. As a result, dirt could easily enter the sealing surface and damage the seal, leading to leaks. As a series countermeasure, the installation height of the swivel frame covers raised and the sealing surface is additionally protected by the housing. If this problem occurs in the field, the swivel joint and other related parts need to be replaced/installed.



(A) Dirt ingress



(B) Leaking oil

☒ **WARRANTY INFORMATION**

- ☐ Mandatory Campaign : Allowable Man-hours ;
- ☒ Technical Bulletin : Allowable Man-hours ; 7.0 hrs.
- Expiration date : 5 years from machine retail date
- ☐ Quality Related Information

☐ **SERVICE INFORMATION**

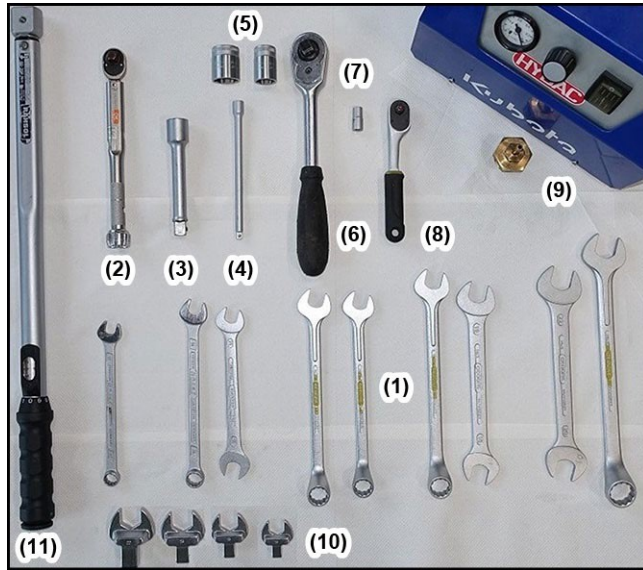
PARTS INFORMATION

No.	Parts No.	Parts Name	Q'ty	Remarks
1	RG058-6230-3	Assy Joint, Swivel	1	KX015-4
2	RG158-6230-3	Assy Joint, Swivel	1	KX016-4, KX018-4, KX019-4
3	RG158-4155-0	Frame (Cover, Rear)	1	-
4	RG158-4151-3	Cover (Front)	1	-
5	RG158-4152-3	Cover (Rear)	1	-
6	RG108-4129-0	Plug	2	-
7	W92BF-1030-0	Bolt (M10X30_P1, 25)	4	-
8	W92SS-5100-0	Washer (Spring)	4	-
9	W92WS-1020-0	Washer	4	-
10	RG158-4156-0	Frame (Cover, Front)	1*	*
11	RG059-9551-3	Bracket SP2-Valve	1*	*

*For machines equipped with optional kits (power tilt or clamshell kit),
use the No.11 instead of No.10

SWIVEL JOINT REPLACEMENT

Required tools:



No.	Tool Name	Remarks
(1)	Spanners, 12, 2x 14, 2x 17, 2x 19, 2x 22 mm	
(2)	Torque wrench 1/4", 1 N·m – 10 N·m	
(3)	Extension bar 1/2", 50 mm	
(4)	Extension bar 1/4", 150 mm	
(5)	Sockets 1/2", 14, 17 mm	
(6)	Ratchet 1/2"	
(7)	Socket 1/4", 7 mm	
(8)	Ratchet 1/4"	
(9)	Vacuum pump with G 3/4" adapter	
(10)	Sockets, 14, 17, 19, 22 mm	
(11)	Torque wrench 20 N·m – 200 N·m	
(12)	Thread locker (Weicon AN302-71 or equivalent)	Not shown
(13)	Brake cleaner	Not shown
(14)	Cloth	Not shown

WARNING

To avoid personal injury or death, and to comply with laws and regulations:

- Park the machine on a firm and level ground.
- Lower the bucket and attachments to the ground.
- Set all controls in their neutral positions.
- Release all residual pressure of the hydraulic system.
- Stop the engine. Remove the key from the ignition.
- The engine, hydraulic components and coolants can be hot.
Wait until all the components have cooled down sufficiently to avoid burns.
- Clean the work area and the machine.
- Disconnect the battery negative (-) cable.
- Hang a "DO NOT OPERATE" tag on the operator station.
- Put on working clothes and personal protective equipment.
- Read all the safety instructions in this instruction manual, the Workshop Manual, the Operator's Manual and the labels.
- Follow the local safety regulations and/or laws in your country.
- If you are working with other people, make sure that your signals and communications are fully understandable for additional safety.

1. Take photo for the warranty claim



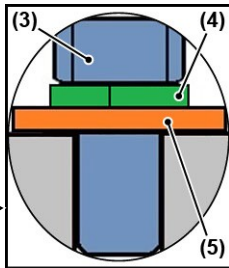
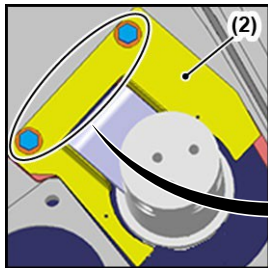
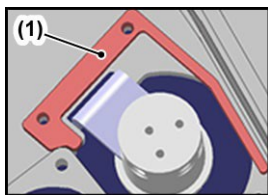
1. Take clear photos showing the oil leakage (1) at the swivel joint and attach it to the warranty claim. The parts can be scrapped.

2. Swivel joint removal

1. Remove the swivel joint according to the instructions in the WSM, chapter 3, "HYDRAULIC SYSTEM, SERVICING", 4. "SWIVEL JOINT", [1] "SWIVEL JOINT REMOVAL AND INSTALLATION".

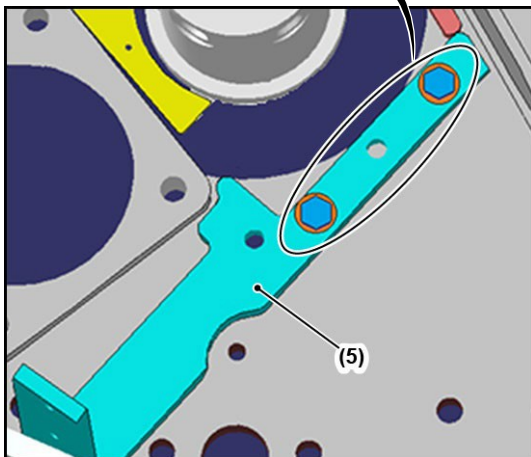
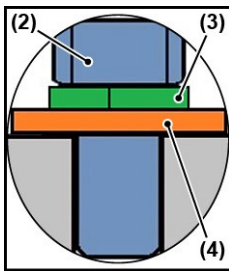
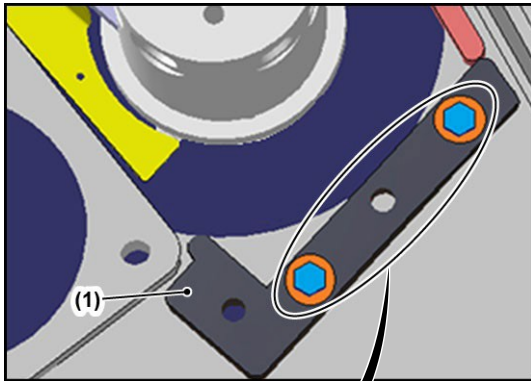
3. Swivel joint installation

1. Install the new swivel joint (RG058-6230-3 for KX015-4; RG158-6230-3 for KX016-4, KX018-4, KX019-4, KX019-4 LPG) according to the workshop manual, without installing the hydraulic hoses at the top of the swivel joint.



2. Assemble the frame (cover, rear) (1) and the cover (rear) (2) with the two bolts (3), the two washers (spring) (4) and the two washers (5) as shown in the illustration.

- (1) Frame (cover, rear) (RG158-4155-0)
- (2) Cover (rear) (RG158-4152-3)
- (3) Bolt (M10X30_P1, 25) (W92BF-1030-0) x2
- (4) Washer (Spring) (W92SS-5100-0) x2
- (5) Washer (W92WS-1020-0) x2

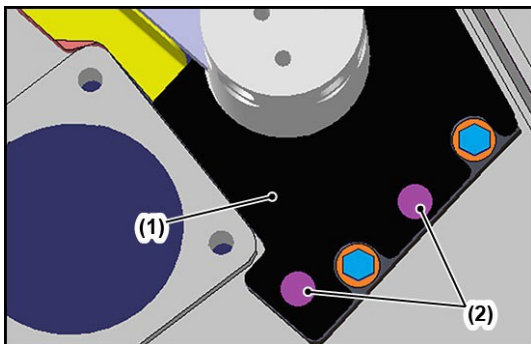


3. Assemble frame (cover, front) (1) with the two bolts (2), the two washers (spring) (3) and the two washers (4).

■ **NOTE**

- For machines equipped with optional kits (power tilt or clamshell kit) use the bracket SP2-valve (5) (RG059-9551-3) instead of the frame (cover, front) RG158-4156-0.

- (1) Frame (cover, front) (RG158-4156-0)
 (2) Bolt (M10X30_P1, 25) (W92BF-1030-0) x2
 (3) Washer (spring) (W92SS-5100-0) x2
 (4) Washer (W92WS-1020-0) x2
 (5) Bracket SP2-valve (RG059-9551-3)



4. Assemble the cover (front) (1) with the two plugs (2).

- (1) Cover (front) (RG158-4151-3)
 (2) Plug (RG108-4129-0) x2

5. Proceed to install the swivel joint according to the WSM, chapter 3, "HYDRAULIC SYSTEM, SERVICING", 4. "SWIVEL JOINT", [1] "SWIVEL JOINT REMOVAL AND INSTALLATION".